

Community Health Needs Assessment

CHI Oakes Hospital – Oakes, ND
Approved May 2025



Acknowledgements

The CHNA process is a significant undertaking resulting from the vision and leadership of numerous individuals and governing bodies. It is important to acknowledge those who have dedicated time and energy to ensure that thoughtful planning and long-range strategic vision serve as the basis for policy and decision-making regarding community health needs.

Researchers with the Center for Social Research at North Dakota State University gratefully acknowledge the support of the individuals and organizations who assisted in the preparation of the Community Health Needs Assessment for CHI Oakes Hospital in Oaks, ND.

Financial support was provided by CHI Health, a member of CommonSpirit Health.

North Dakota State University does not discriminate on the basis of age, color, disability, gender expression/identity, genetic information, marital status, national origin, public assistance status, race, religion, sex, sexual orientation, or status as a U.S. veteran. Please address your inquiries regarding this publication to: The NDSU Center for Social Research, P.O. Box 6050, Dept. 2574, Fargo, ND 58108-6050, Phone: 701-231-8621, Email: Nancy.Hodur@ndsu.edu

NDSU is an equal opportunity institution.

Copyright © 2025 by Hodur, Schroeder, and Slone. All rights reserved. Readers may make verbatim copies of this document for non-commercial purposes by any means, provided this copyright notice appears on all such copies.

Table of Contents

Executive Summary.....	4
Purpose.....	4
CommonSpirit Health Commitment and Mission Statement.....	4
CHNA Collaborators.....	4
Community Definition.....	4
Assessment Process and Methods.....	4
Prioritized of Significant Health Needs.....	5
Resources Potentially Available.....	6
Report Adoption, Availability, and Comments.....	6
Community Definition.....	6
Hospital Description.....	7
Assessment Process and Methods.....	8
Secondary data: community profiles.....	8
Primary data: health needs survey and community discussion.....	8
Community Input.....	8
Assessment Data and Findings.....	9
Community Profile.....	9
Community Demographics.....	9
Community Health Factors and Outcomes.....	13
National Risk Index.....	14
Community Health Survey Analysis.....	16
Demographics.....	16
Findings.....	16
Significant Community Health Needs.....	22
Resources Potentially Available to Address Needs.....	23
Impact of Actions Taken Since Preceding CHNA.....	25
2023- 2025 Community Health Implementation Strategy.....	25
Health Need: Availability of Mental Health Services.....	25
Health Need: Availability of Vision Care.....	28
Health Need: Depression/Anxiety.....	28
Health Need: Alcohol Use and Abuse.....	29
References.....	30
Appendices.....	31
Appendix A: CDC/ASTDR Social Vulnerability Index 2022 for Dickey County.....	31
Appendix B: Survey Instrument.....	32
Appendix C: Survey Frequencies.....	44

Executive Summary

Purpose

The purpose of this community health needs assessment (CHNA) is to identify and prioritize significant health needs of the community served by CHI Oakes Hospital in Oakes, North Dakota. The priorities identified in this report help to guide the hospital's community health improvement programs and community benefit activities, as well as its collaborative efforts with other organizations that share a mission to improve health. This CHNA report meets requirements of the Patient Protection and Affordable Care Act that not-for-profit hospitals conduct a community health needs assessment at least once every three years.

CommonSpirit Health Commitment and Mission Statement

The hospital's commitment to engaging with the community, assessing priority needs, and helping to address them with community health program activities is in keeping with its mission. As CommonSpirit Health, we make the healing presence of God known in our world by improving the health of the people we serve, especially those who are vulnerable, while we advance social justice for all.

CHNA Collaborators

CHI Oakes Hospital contracted with the North Dakota State University Center for Social Research to conduct the CHNA. The Center for Social Research developed community profiles and developed and conducted a community feedback survey that provided the foundation for this needs assessment. Dickey County Public Health and Sanford Health collaborated with CHI Oakes Hospital on the CHNA.

Community Definition

CHI Oakes Hospital is located in Oakes, North Dakota. The hospital primarily serves Dickey County where Oakes is located, and is the only hospital in Dickey County. Dickey County is designated as a Health Professional Shortage Area (HPSA) and a Medically Underserved Area (MUA) by the United States Health Resources and Services Administration. Dickey County is a rural county located in southeastern North Dakota and has a population of 5,003.

Assessment Process and Methods

Community health needs were assessed using secondary data from national and state sources and primary data gathered from community members during a two-month survey period. CHI Oakes Hospital solicited input from community organizations representing health, education, law enforcement, victim advocacy, social services, and the medically underserved to review and validate community health needs at a community input meeting held January 7, 2025.

Multiple data sources with various indicators that inform social considerations were compiled and analyzed. Data sources included but are not limited to County Health Rankings, the American Community Survey (ACS), the Bureau of Economic Analysis (BEA), and the Centers for Disease Control and Surveillance (CDC). All community level data were compared to state and national data for context. Community member input was solicited via an online survey and a community input meeting.

The survey was administered using a QR code for public distribution using various online and print media and a survey link that was distributed by hospital personnel. Upon conclusion of the survey fielding period, data were compiled and analyzed. Survey data were analyzed using widely accepted standard descriptive statistics, such as measures of mean, median, and frequencies. Priority needs were identified as those issues with the greatest level of consensus among survey respondents.

Prioritized of Significant Health Needs

Based on analysis of survey data, the following were identified as issues with the greatest degree of consensus among survey respondents. Secondary data are provided in support of these findings as appropriate.

- **Mental health (anxiety, stress, depression) and suicide.** Nearly all respondents (98 percent) expressed some concern about mental health; 40 percent were very concerned. Regarding suicide specifically, 94 percent of respondents expressed some concern about the issue; 26 percent were very concerned. Half (51 percent) of respondents disagreed that there are adequate mental health services in their community. Mental health was identified as a priority health need in the previous CHNA conducted in 2022. When asked how this issue has changed since then, 42 percent of respondents said that the availability of mental health services has improved and 42 percent said it has stayed the same. Respondents were less encouraged about improvements in depression or anxiety and stress in their community; 25 percent said stress has worsened and 27 percent said that depression or anxiety has worsened since 2022.
- **Substance misuse.** Nearly all respondents (97 percent) expressed some concern about substance misuse (alcohol, prescription drugs, tobacco or vaping, illicit or street drugs); 43 percent were very concerned and 34 percent were somewhat concerned. The adult smoking rate in Dickey County is 16 percent, which is similar to the rate in North Dakota (16 percent) and the nation overall (15 percent). The adult excessive drinking rate in Dickey County is 20 percent, which is lower than the statewide average (23 percent). However, the percentage of driving deaths due to alcohol-impairment is substantially higher in Dickey County (67 percent) than in North Dakota (39 percent) and the nation overall (26 percent).
- **Access to health care.** The price of health care, even with insurance, was a barrier for 54 percent of respondents; 15 percent indicated that price was an extreme barrier. Fifty-three percent of respondents indicated the availability of local medical services was a barrier; 10 percent said it was an extreme barrier. When asked specifically about health care services, 51 percent of respondents disagreed that their community has adequate mental health services, 28 percent disagreed that their community has adequate dental care providers, and 22 percent disagreed their community has adequate vision care providers. The availability of mental health services and vision care were identified as priority health needs in the previous CHNA in 2022. Most respondents (82 percent) said the availability of vision care has improved since 2022 and 42 percent said the availability of mental health care services has improved since then. The ratio of residents per dentist in Dickey County (1,640:1) is slightly higher (worse) than in North Dakota (1,420:1) and the nation overall (1,360:1). The ratio of residents per mental health care provider in Dickey County (2,450:1) is substantially higher (worse) than in North Dakota (420:1) and the nation (300:1). In addition, the median household income in Dickey County (\$60,250) is substantially lower than in North Dakota (\$73,959) and the U.S. (\$75,149).
- **Emotional and physical violence.** Community members indicated that they are concerned about emotional and physical violence in their community. At least half of respondents were at least somewhat concerned about cyber bullying, emotional abuse, child abuse or neglect, and intimate partner violence. About 1 in 4 respondents indicated that they were very concerned

about cyber bullying (29 percent) and emotional abuse (28 percent) and 1 in 5 were very concerned with child abuse or neglect (21 percent) and intimate partner violence (18 percent).

Resources Potentially Available

Programs, resources, and organizations in the community that are potentially available to address the significant health needs were identified by key informants giving input to this process. While not exhaustive, this list draws on the experiences and knowledge base of those directly serving the community. A list of community resources can be found in a separate resource section later in the report.

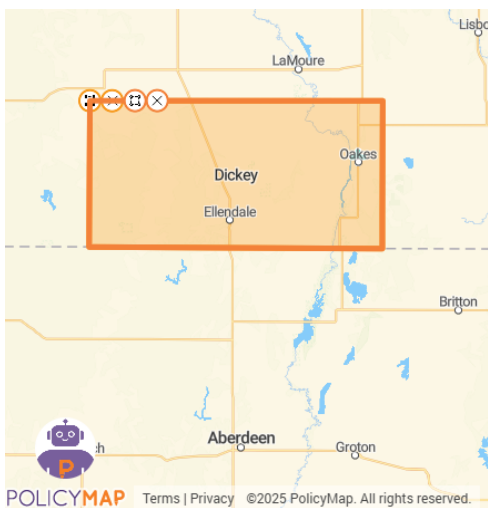
Report Adoption, Availability, and Comments

This CHNA report was adopted by the CHI Oakes Hospital Board of Directors in May 2025. The report is widely available to the public on the hospital’s website, and a paper copy is available for inspection upon request at the Administration Office of CHI Oakes Hospital. Written comments on this report can be submitted via mail to CHI Health - The McAuley Fogelstrom Center (12809 W Dodge Rd, Omaha, NE 68154 attn. Healthy Communities); electronically at: <https://forms.gle/KGRq62swNdQyAehX8>; or by calling Ashley Carroll, Market Director, Community and Population Health, at: (402) 343-4548.

Community Definition

CHI Oakes Hospital is a 20-bed Critical Access Hospital located in Oakes, North Dakota at 1200 N 7th Street. The hospital primarily serves Dickey County where Oakes is located, and is the only hospital in Dickey County. Dickey County is designated as a Health Professional Shortage Area (HPSA) and a Medically Underserved Area (MUA) by the United States Health Resources and Services Administration.

Figure A: CHI Oakes Hospital Community Needs Assessment Service Area



The following zip codes correspond to 80 percent of admission to CHI Oakes Hospital: 58017, 58032, 58458, and 58474.

Core demographics for Dickey County are summarized in Table 1.

Table 1: Core Demographic Summary, Dickey County, North Dakota	
Measure	Dickey County, ND
Community Description	Rural
Population	5,003
<i>Racial and Ethnic Distribution</i>	
White, non-Hispanic alone	89.0%
American Indian and Alaska Native alone	2.2%
Black or African American alone	0.2%
Asian or Pacific Islander alone	1.0%
Some other race alone	1.6%
Two or more races	3.4%
Hispanic Origin (of any race)	4.8%
Median Household Income	\$60,250
Percent of Persons below Poverty Rate	9.2%
Unemployment Rate	1.7%
Percent Population with less than High School Diploma	8.6%
Percent of People 5 and Older who are Non-English Speaking	2.6%
Percent of People without Health Insurance	8.0%
Percent of People with Medicaid	11.5%
Health Professional Shortage Area	Yes
Medically Underserved Area	Yes
Number of Hospitals in the County	1 (CHI Oakes Hospital)

Hospital Description

The history of CHI Oakes Hospital dates back to 1923 when it began as St. Anthony Hospital. In 1950, the Sisters of St. Francis of the Immaculate Heart of Mary purchased the hospital and eventually opened a new facility. In 1998, the Sisters of St. Francis transferred the sponsorship of the Oakes Community Hospital to CHI. The current hospital building was newly constructed in 2007, replacing a 50-year-old building. In 2010, the Oakes Community Clinic was opened within the hospital building.

The medical staff at CHI Oakes Hospital consists of multi-specialists in family practice, internal medicine, cardiology, sports medicine, and geriatrics. There are also a number of specialists on the courtesy staff providing services such as cataract and general surgery. The physicians work alongside highly trained nursing staff to provide excellent patient care. Physical Therapists and a Certified Nurse Anesthetist provide additional services to meet the community's needs. The CHI Oakes Hospital boasts a dynamic nursing team with excellent skills. All nurses receive Advanced Cardiac Life Support Certification and cross-training in all areas of the hospital.

Assessment Process and Methods

Community health needs were assessed using a two-pronged analysis approach: secondary data from national and state sources; and primary data gathered from community members during a two-month survey period. CHI Oakes Hospital solicited input from community organizations representing health, education, law enforcement, victim advocacy, social services, and the medically underserved to review and validate community health needs at a community input meeting held January 7, 2025.

Secondary data: community profiles

Community profiles are an integral part of assessing community health needs. To get a complete sense of the community, multiple data sources with various indicators that inform social considerations were compiled and analyzed. Data sources include but are not limited to County Health Rankings, the American Community Survey (ACS), the Bureau of Economic Analysis (BEA), and the Centers for Disease Control and Surveillance (CDC). All community level data were compared to state and national data for context.

Primary data: health needs survey and community discussion

To help supplement secondary data sources, community member input was solicited via an online survey and a community input meeting. The online survey was administered using the Qualtrics online survey platform from August 12 to October 16, 2024. The survey was administered using a QR code for public distribution using various online and print media and a survey link that was distributed by hospital personnel. The survey tool can be found in Appendix B.

The survey solicited feedback on respondents' perceptions of various issues and topics in six broad categories: people in my community, services in my community, concerns in my community, concerns about violence, medical services, and barriers to care. Survey data were analyzed using widely accepted standard descriptive statistics, such as measures of mean, median, and frequencies. Priority needs were identified as those issues with the greatest level of consensus among survey respondents. Survey findings are detailed later in this assessment. The questionnaire can be found in Appendix B and detailed results in Appendix C.

Community Input

CHI Oakes Hospital solicited feedback on survey findings at a community input meeting held on January 7, 2025. A presentation that summarized the community profile and highlighted key survey findings was used to report and validate priority needs identified in the survey results, as well as guide discussion of needs and priorities for community health improvement planning. There were 19 attendees, including representatives from:

- Dickey County Public Health
- Oakes Volunteer Ambulance Service (OVAS)
- Sanford Health
- Growing Small Towns

CHI Oakes Hospital collaborated with Dickey County Public Health and Sanford Health. CHI Oakes Hospital contracted with the North Dakota State University Center for Social Research to conduct the CHNA. The Center for Social Research developed community profiles and developed and conducted a community feedback survey that provided the foundation for this needs assessment.

The hospital invited written comments on the most recent CHNA report and Implementation Strategy both in the documents and on the website where they are widely available to the public. No written comments have been received.

Assessment Data and Findings

The following sections provide a detailed community profile and survey results.

Community Profile

Dickey County is a rural county in southeastern North Dakota. The county seat and largest city is Oakes. With 5,003 residents, Dickey County is North Dakota's 24th most populous county. It is home to proportionally more adults aged 65 and older than North Dakota and the United States as a whole. Like most of North Dakota, Dickey County's racial composition is largely white. The median household income and median home value are both lower in Dickey County than in North Dakota or the nation, but so are the costs associated with home rental and home ownership. Dickey County's poverty rate is also lower than North Dakota and national averages.

Dickey County has a higher rate of adult obesity than North Dakota and the United States. And while the adult excessive drinking rate in Dickey County is lower than the average for North Dakota overall, driving deaths due to alcohol impairment are higher. The county's leading causes of death in 2021 were malignant neoplasms, diseases of the heart, and COVID-19. Dickey County has a higher annual flu shot rate than North Dakota and the nation. While the ratio of residents to primary care physicians in Dickey County is similar to the statewide and national averages, the ratio of residents to mental health care providers and to dentists in Dickey County are higher (worse) than the ratios in North Dakota and the nation.

Dickey County faces relatively moderate to very high expected annual loss due to cold waves, winter weather, strong wind, hail, and ice storms. However, Dickey County's overall risk due to natural hazards is Very Low. Dickey County's social vulnerability is rated as Very Low and its community resilience is rated Relatively High. These factors combined give Dickey County a Very Low National Risk Index Score.

Community Demographics

The American Community Survey's (ACS) most recent five-year estimate of Dickey County's population is 5,003, making it the state's 24th most populous county. One in four residents (25.1 percent) in Dickey County are under the age of 18 and 19.1 percent are aged 65 and older (Table 2). The county's racial composition is largely non-Hispanic white (89.0 percent). Roughly three percent of the population speaks English less than very well (Table 1). The county's gender split is roughly even, at 50.1 percent female and 49.9 percent male.

Table 2: Population Estimates, Dickey County, ND, North Dakota, and United States, by Age, Race/Ethnicity, and Sex (2022)

Item	Dickey County Population	Dickey County Percentages	North Dakota Percentages	United States Percentages
Age Group				
0-4	304	6.1%	6.7%	5.7%
5-17	949	19.0%	16.9%	16.4%
18-24	556	11.1%	11.3%	9.4%
25-44	1,041	20.8%	27.1%	26.6%
45-64	1,199	24.0%	22.2%	25.3%
65 and older	954	19.1%	15.9%	16.5%
Total	5,003	100.0%	100.0%	100.0%
Race and Ethnicity*				
White, non-Hispanic alone	4,451	89.0%	83.0%	58.9%
American Indian and Alaska Native alone	110	2.2%	4.7%	0.8%
Asian or Pacific Islander alone	50	1.0%	1.8%	6.0%
Black or African American alone	11	0.2%	3.2%	12.5%
Some other race alone	80	1.6%	1.4%	6.0%
Two or more races	170	3.4%	4.4%	8.8%
Hispanic Origin (of any race)	240	4.8%	4.3%	18.7%
Sex				
Female	2,506	50.1%	48.6%	50.4%
Male	2,497	49.9%	51.4%	49.6%
Total	5,003	100.0%	100.0%	100.0%
*Overlapping racial/ethnic categories mean that the percentages will not total to 100% of the population. Source: U.S. Census Bureau, 2018-2022 American Community Survey (ACS) 5-year estimates.				

Estimates from the ACS indicate that there are 1,916 households in Dickey County with an average of 2.5 persons per household. The median household income is \$60,250, which is substantially lower than the median household income in North Dakota (\$73,959) and the nation (\$75,149) (Table 3). About 3 in 4 (77.8 percent) households in Dickey County are owner-occupied and the median owner costs are \$1,245 per month including the mortgage. Median rent in Dickey County is \$759 per month. Both median owner costs and median rent are lower in Dickey County than in North Dakota and the United States overall. About one in three households in Dickey County are occupied by householders living alone (32.6 percent) and have children in residence (30.6 percent) (Table 4). In general, the percentage of households with children, households with residents aged 65 and older, householders living alone, and householders aged 65 and older living alone in Dickey County are roughly on par with statewide and national averages.

Item	Dickey County	North Dakota	United States
Total households	1,916	320,038	125,736,353
Owner-occupied housing rate	77.8%	63.2%	64.8%
Average household size (persons per household)	2.5	2.3	2.6
Median value of owned-occupied housing	\$164,700	\$232,500	\$281,900
Median monthly owner costs (with mortgage)	\$1,245	\$1,653	\$1,828
Median monthly owner costs (without mortgage)	\$543	\$551	\$584
Median gross rent	\$759	\$912	\$1,268
Median household income	\$60,250	\$73,959	\$75,149

Source: U.S. Census Bureau, 2018-2022 American Community Survey (ACS) 5-year estimates.

Household Characteristics	Dickey County Households	Percent of Dickey County Households*	Percent of North Dakota Households*	Percent of United States Households*
Households with children 0-17	586	30.6%	27.8%	30.2%
Households with adults 65+	573	29.9%	26.7%	30.8%
Householders living alone	625	32.6%	33.2%	28.3%
Householders aged 65+ living alone	230	12.0%	11.8%	11.5%

*Overlapping household characteristics mean that the percentages of households will not total to 100% of the total number of households. Source: U.S. Census Bureau, 2018-2022 American Community Survey (ACS) 5-year estimates.

Estimates from the ACS indicate that there are 2,520 adults in the workforce in Dickey County. The largest industries in the county by percentage of the workforce employed are educational services, health care, and social assistance; agriculture, forestry, fishing, hunting, and mining; and retail, which account for 21.3 percent, 16.6 percent, and 14.6 percent, respectively (Table 5). Other industries that employ substantial portions of the county’s workforce include manufacturing and arts, entertainment, recreation, accommodation, and food service. In 2023, the county’s three largest employers were Oakes Public School District, Harris Machine Company, and Ellendale Public School District. CHI Oakes Hospital was the fourth largest employer in the county (NDLMI 2024).

Sector	Workers	Percent of Workforce
Educational services, health care and social assistance	538	21.3%
Agriculture, forestry, fishing, hunting and mining	419	16.6%
Retail	367	14.6%
Manufacturing	364	14.4%
Arts, entertainment, recreation, accommodation, food service	178	7.1%
Other	654	26.0%
Total workforce	2,520	100.0%

Source: U.S. Census Bureau, 2018-2022 American Community Survey (ACS) 5-year estimates.

The poverty rate in Dickey County is 9.2 percent, which is lower than the poverty rate in North Dakota overall (10.8 percent) and nationally (12.5 percent) (Table 6). About 8 percent of children in Dickey County live below the poverty line compared to 11.3 percent statewide and 16.7 percent nationally. Sixteen percent of school-aged children in Dickey County are eligible for free or reduced-price school lunch, which is lower than in North Dakota overall (23.2 percent) and much lower than the national average (50.8 percent).

Table 6: Poverty Characteristics, Dickey County, ND, North Dakota, and United States (2022)

Poverty Characteristics	Dickey County Estimate	Dickey County Percent*	North Dakota Percent*	United States Percent*
All persons below poverty level (% of total population)	433	9.2%	10.8%	12.5%
All persons below 200% poverty level (% of total population)	1,389	29.5%	24.7%	28.8%
Children aged 0-17 below poverty level (% of children 0-17)	99	8.1%	11.3%	16.7%
Adults aged 65 and older below poverty level (% of adults 65 and older)	72	8.6%	9.1%	10.0%
Eligible recipients of free or reduced-price school lunch	120	15.7%	23.2%	50.8%

*Differing populations and overlapping categories mean that percentages will not total to 100%.
 Sources: U.S. Census Bureau, 2018-2022 American Community Survey (ACS) 5-year estimates; 2024 County Health Rankings & Roadmaps, a program of the University of Wisconsin Population Health Institute

Most residents in Dickey County aged 25 and older (64.8 percent) have at least some college experience; 26.8 percent have attained a bachelor's degree or higher. This is lower than in North Dakota and nationally, where 31.4 percent and 34.3 percent of the population aged 25 and older have at least a bachelor's degree. Fewer than one in 10 residents ages 25 and older did not complete high school (8.6 percent), which is higher than in North Dakota (6.5 percent) but lower than the national average (10.9 percent) (Table 7).

Table 7: Educational Attainment for Persons Aged 25 and Older, Dickey County, ND, North Dakota, and United States (2022)

Level of Education Attained	Dickey County Estimate	Dickey County Percent of Population 25 and Older	North Dakota Percent of Population 25 and Older	United States Percent of Population 25 and Older
Less than high school	274	8.6%	6.5%	10.9%
High school diploma or GED	853	26.7%	26.1%	26.4%
Some college or Associate's degree	1,214	38.0%	36.0%	28.5%
Bachelor's degree	666	20.9%	22.3%	20.9%
Graduate or professional degree	187	5.9%	9.1%	13.4%
<i>Total population aged 25 and older</i>	<i>3,194</i>	<i>100.0%</i>	<i>100.0%</i>	<i>100.0%</i>

Source: U.S. Census Bureau, 2018-2022 American Community Survey (ACS) 5-year estimates.

Community Health Factors and Outcomes

As of 2021, Dickey County had a prevalence of adult smokers on par with statewide and national averages (16 percent in Dickey County, compared to 16 percent statewide and 15 percent nationally) (Table 8). The adult obesity rate in Dickey County (39 percent) is slightly higher than in North Dakota (36 percent) and the nation (34 percent) overall. Although the percentage of adults who reportedly engage in excessive drinking in Dickey County (20 percent) is lower than it is in North Dakota (23 percent), the percentage of driving deaths due to alcohol-impairment is substantially higher in Dickey County (67 percent) than in North Dakota (39 percent) and the nation overall (26 percent). The prevalence of Dickey County residents reporting poor mental health days in the past month is the same as the statewide average (4.0 days each) and slightly lower than the national average (4.8 days).

Health Behavior	Dickey County	North Dakota	United States
Adult Smoking	16%	16%	15%
Adult Obesity	39%	36%	34%
Adult Excessive Drinking	20%	23%	18%
Alcohol-Impaired Driving Deaths	67%	39%	26%
Physical Inactivity ¹	25%	25%	23%
Access to Exercise Opportunities ²	45%	76%	84%
Poor Mental Health Days ³	4.0	4.0	4.8

Source: 2024 County Health Rankings & Roadmaps, a program of the University of Wisconsin Population Health Institute.
¹Physical Inactivity refers to the percent of adults who report participating in no physical activity outside of work.
²Access to Exercise Opportunities refers to the percent of adults who report living close to a park or recreation facility.
³The average number of self-reported mentally unhealthy days in the past 30 days.

The leading causes of death for residents under age 75 in Dickey County were malignant neoplasms, diseases of the heart, and COVID-19 (Table 9). Life expectancy in Dickey County is 76.6 years, which is lower than life expectancy in North Dakota (78.1 years) and the United States (77.6 years) (County Health Rankings & Roadmaps, 2024).

Cause of Death	Deaths	Rate Per 100,000 Population Under 75
Malignant Neoplasms	13	Unreliable
Diseases of the heart	12	Unreliable
COVID-19	10	Unreliable

Source: 2024 County Health Rankings & Roadmaps, a program of the University of Wisconsin Population Health Institute.
 Crude rates per 100,000 population under 75 are unreliable due to the small number of deaths.

The rate of people under age 65 without health insurance in Dickey County is similar to the statewide and national averages. In Dickey County, 8 percent of people under the age of 65 did not have health insurance, compared with 9 percent in North Dakota and 10 percent nationally (Table 10). The annual flu shot rate in Dickey County is 53 percent, which is four percentage points higher than in North Dakota (49 percent) and seven percentage points higher than the nation (46 percent). The Food Environment Index is a measure of food security and access to healthy foods with a ranking system ranging from 0 (worst) to 10 (best). Dickey County’s Food Environment Index score was 10.0, which is higher than North Dakota’s score of 9.1 and the national score of 7.7 (Table 10).

Table 10: Other Health Factors, Dickey County, ND, North Dakota, and United States

Description of Factor	Dickey County	North Dakota	United States
Uninsured Rate, 2021	8%	9%	10%
Medicaid Coverage, 2022	11.5%	11.9%	20.4%
Unemployment Rate, 2022	1.7%	2.1%	3.7%
Low Birthweight Rate, 2016-2022	4%	7%	8%
Annual Mammogram Rate, 2021 ¹	42%	53%	43%
Annual Flu Shot Rate, 2021 ²	53%	49%	46%
Food Environment Index, 2019-2021 ³	10.0	9.1	7.7

Sources: US Census Bureau's Small Area Health Insurance Estimates (SAHIE) program, 2021; US Census Bureau's American Community Survey (ACS) 5-year estimates, 2022; The Local Area Unemployment Statistics (LAUS) program of the Bureau of Labor Statistics, 2022; Map the Meal Gap, Feeding America, 2021; The Centers for Medicare & Medicaid Services office of Minority Health's Mapping Medicare Disparities (MMD) Tool, 2021.
¹Percentage of female Medicare enrollees who received an annual mammogram.
²Percent of Medicare enrollees who received an annual flu shot.
³The Food Environment Index is a measure of food environment that combines food insecurity rates with rates of access to healthy foods. It is scored on a scale from 0 (worst) to 10 (best).

Dickey County has slightly fewer residents per primary care physician than North Dakota and the nation overall. However, Dickey County has more residents per dentist and many more residents per mental health care provider than North Dakota and the United States (Table 11).

Table 11: Number of Residents Per Health Care Provider in Dickey County, ND, North Dakota, and the United States

Type of Provider	Dickey County	North Dakota	United States
Primary Care Physicians, 2021	1,220:1	1,290:1	1,330:1
Mental Health Care Providers, 2024	2,450:1	420:1	300:1
Dentists, 2022	1,640:1	1,420:1	1,360:1

Sources: Health Resources & Services Administration, Area Health Resource Files; CMS, National Provider Identification Registry.

National Risk Index

The Federal Emergency Management Agency (FEMA) administers the National Risk Index, a dataset and tool that estimates the risk level for natural disasters at the county level. A county's Risk Index is calculated using three metrics: Expected Annual Loss, Social Vulnerability, and Community Resilience. A community's exposure to and ability to cope with hazardous conditions can have a substantial impact on factors that inform community health outcomes, such as the strain on that community's health care system and its ability to make sure that residents have access to essential goods and services in times of crisis.

Overall, Dickey County's National Risk Index rating is Very Low. This indicates a strong general preparedness for and ability to recover from natural and manmade hazards. About half (49.1 percent) of North Dakota counties have a lower National Risk Index score than Dickey County and 24.1 percent of counties nationally have a lower score (Table 12).

Table 12: National Risk Index Percentiles for Dickey County, ND when compared to North Dakota Counties and U.S. Counties (2024)

Index	Percentile within North Dakota	U.S. Percentile
Expected Annual Loss	56.6	34.2
Social Vulnerability	32.1	5.7
Community Resilience	62.3	69.5
<i>National Risk Index</i>	<i>49.1</i>	<i>24.1</i>

Note: The Risk Index can be read as “49.1% of counties in North Dakota have a lower Risk Index than Dickey County; 24.1% of U.S. counties have a lower Risk Index than Dickey County.”
 Sources: FEMA, National Risk Index; CDC/ATSDR Social Vulnerability Index 2022; University of South Carolina's Hazards and Vulnerability Research Institute (HVRI)'s Baseline Resilience Indicators for Communities (HVRI BRIC).

Expected Annual Loss

Expected Annual Loss scores are calculated by combining a community’s exposure to natural hazards, annualized frequency of hazards, and the historic loss ratio for various natural hazards. Dickey County’s overall Expected Annual Loss is rated as Very Low overall on a five-point scale: Very Low, Relatively Low, Relatively Moderate, Relatively High, and Very High (NRI 2024). However, the county faces relatively high winter weather and cold wave hazards. Expected annual loss caused by cold wave, winter weather, strong wind, hail, and ice storm is also rated at least relatively moderate, with expected annual loss due to winter weather in particular rated very high. Dickey County’s expected annual loss is higher than 56.6 percent of North Dakota counties and 34.2 percent of counties nationally.

Social Vulnerability Index

Social vulnerability is a concept related to a community’s ability to prepare for and respond to hazardous events. A community’s social vulnerability is gauged using the Social Vulnerability Index (SVI) (ATSDR) (CDC, 2024): an aggregated index of 16 socioeconomic factors categorized into four themes: socioeconomic status, household characteristics, racial and ethnic minority status, and housing type/transportation. SVI is a nationally recognized measure of a location’s social vulnerability, and therefore its ability to prepare for and respond to disasters. While the SVI technically is a measure of ability to respond to natural disasters and aid emergency planning, the index is an accepted tool to gauge overall community socioeconomic well-being. A higher SVI indicates a higher vulnerability to hazard.

Dickey County’s Social Vulnerability is rated Very low. Dickey County has higher social vulnerability than 32.1 percent of North Dakota counties and 5.7 percent of counties nationally. For a more thorough breakdown of Dickey County’s Social Vulnerability see Appendix A.

Community Resilience

A community’s Community Resilience score is defined as its ability to prepare for, withstand, and recover from hazardous events (Cutter et al. 2014). Categories considered in the compilation of scores include Human Well-Being, Economy, Infrastructure, Governance, Community Capacity, and Environment. Dickey County’s Community Resilience ranking is Relatively High. Dickey County has higher community resilience than 62.3 percent of North Dakota counties and 69.5 percent of counties nationally. Community resilience indicators suggest the county is relatively well-prepared to respond to hazardous events.

Community Health Survey Analysis

The survey solicited feedback on respondents’ perceptions of various issues and topics in six broad categories: people in my community, services in my community, concerns in my community, concerns about violence, medical services, and barriers to care. Survey data were analyzed using widely accepted standard descriptive statistics, such as measures of mean, median, and frequencies. Priority needs were identified as those issues with the greatest level of consensus among survey respondents. Detailed survey findings can be found in Appendix C.

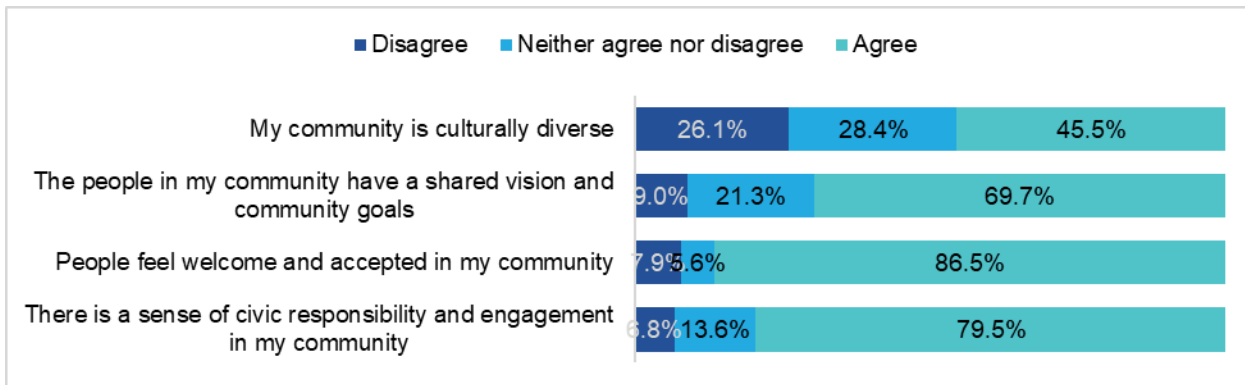
Demographics

There were 91 respondents to the CHI Oakes CHNA survey with a mean age of 43 years. Eighty-one percent of respondents were female and 96 percent identified as white. Fifty-eight percent of respondents had an associate’s degree or bachelor’s degree as their highest level of education. Two-thirds of respondents (67 percent) were employed full-time and 24 percent were retired. Twenty-seven percent of respondents reported an annual household income of \$50,000 to \$74,999 and 44 percent reported \$75,000 or more.

Findings

Overall, respondents were generally positive about the people in their community: 87 percent of respondents agreed that people feel welcome and accepted in their community and 80 percent agreed that there is a sense of civic responsibility and engagement in their community. Seventy percent agreed that the people in their community have a shared vision and goals. However, far fewer respondents (46 percent) agreed that their community is culturally diverse; 28 percent neither agreed nor disagreed and 26 percent disagreed with that statement (Figure 1).

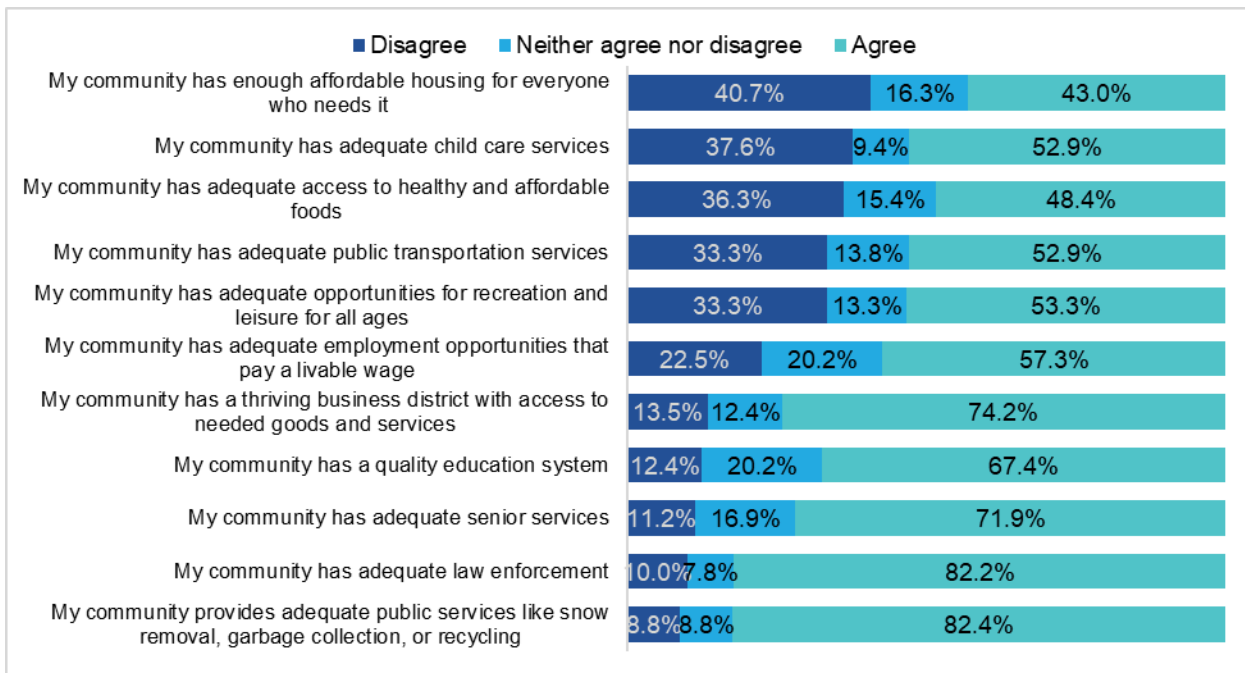
Figure 1: People in My Community, Community Health Needs Assessment, 2024



Respondent n: 88-89.

Most respondents thought well of various services in their community. Eighty-two percent of respondents agreed their community provides adequate public services (such as snow removal), 82 percent agreed their community has adequate law enforcement, and 74 percent agreed their community has a thriving business district with access to needed goods and services. Respondents were divided on the topic of affordable housing. While 43 percent agreed the community has enough affordable housing for everyone who needs it, 41 percent disagreed with the same statement and 16 percent neither agreed nor disagreed. Thirty-six percent of respondents disagreed that their community has access to healthy and affordable foods, 15 percent neither agreed nor disagreed, and 48 percent agreed. Thirty-eight percent of respondents disagreed their community has adequate child care services, though 53 percent agreed with the same statement (Figure 2).

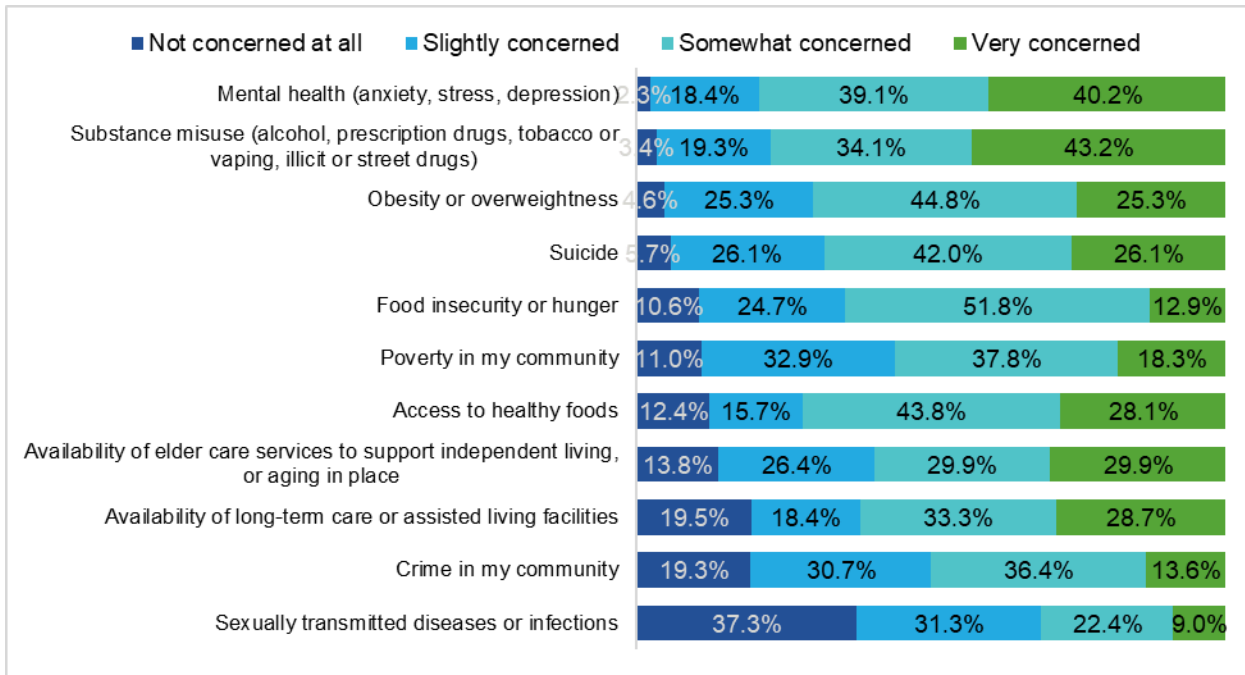
Figure 2: Services in My Community, Community Health Needs Assessment, 2024



Respondent n: 96-91.

Similar percentages of respondents were concerned about mental health and substance misuse in their community; 98 percent of respondents expressed at least slight concern about mental health, with 40 percent being very concerned. Ninety-seven percent of respondents were at least slightly concerned about substance misuse, with 43 percent being very concerned. Obesity or overweightness followed closely, with 95 percent of respondents expressing at least slight concern about this issue (25 percent were very concerned). Similarly, 94 percent of respondents were at least slightly concerned about suicide (26 percent were very concerned). One-third (37 percent) of respondents were not concerned at all about sexually transmitted diseases or infections (STIs) (Figure 3).

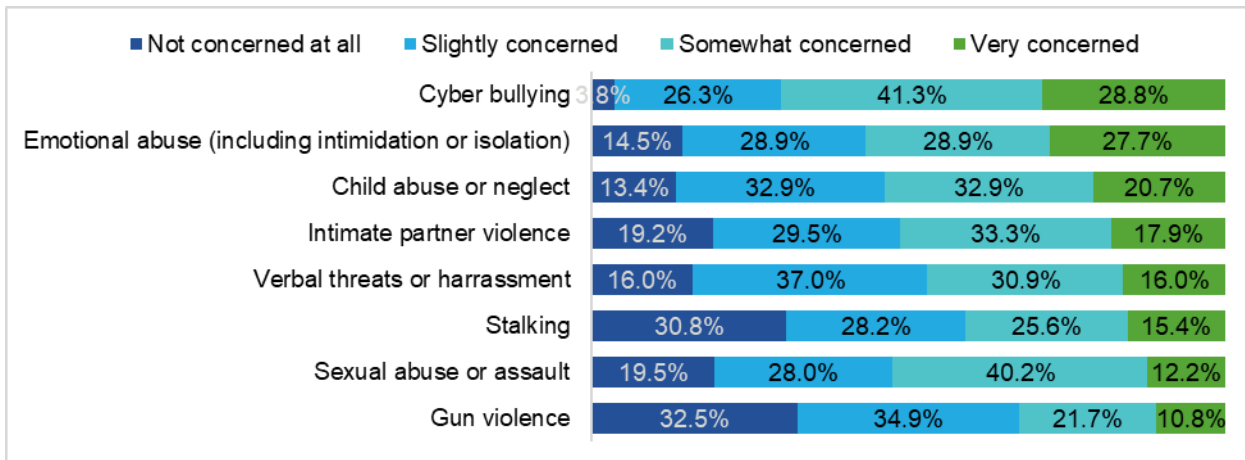
Figure 3: Concerns in My Community, Community Health Needs Assessment, 2024



Respondent n: 67-89.

Nearly all (96 percent) respondents were concerned about cyber bullying in their community; 29 percent were very concerned about this issue. A similar percentage (28 percent) were very concerned about emotional abuse (including intimidation or isolation) and 21 percent were very concerned about child abuse or neglect. One-third of respondents were not concerned at all about stalking (31 percent) or gun violence (33 percent) (Figure 4).

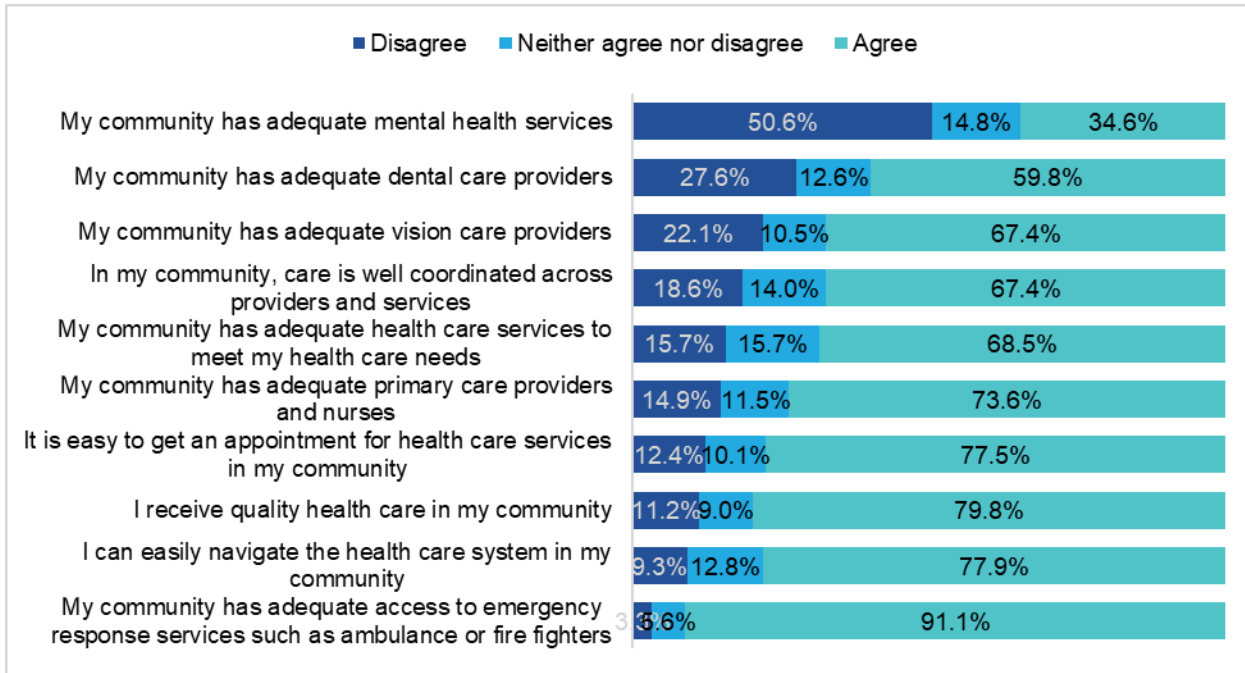
Figure 4: Violence Concerns in My Community, Community Health Needs Assessment, 2024



Respondent n: 81-90.

With respect to medical services in their community, respondents were mostly positive. However, half (51 percent) of respondents disagreed that there are adequate mental health services in their community and 15 percent neither agreed nor disagreed with that statement. Nearly all (91 percent) respondents agreed that the community has adequate access to emergency response services (such as ambulance services) (Figure 5).

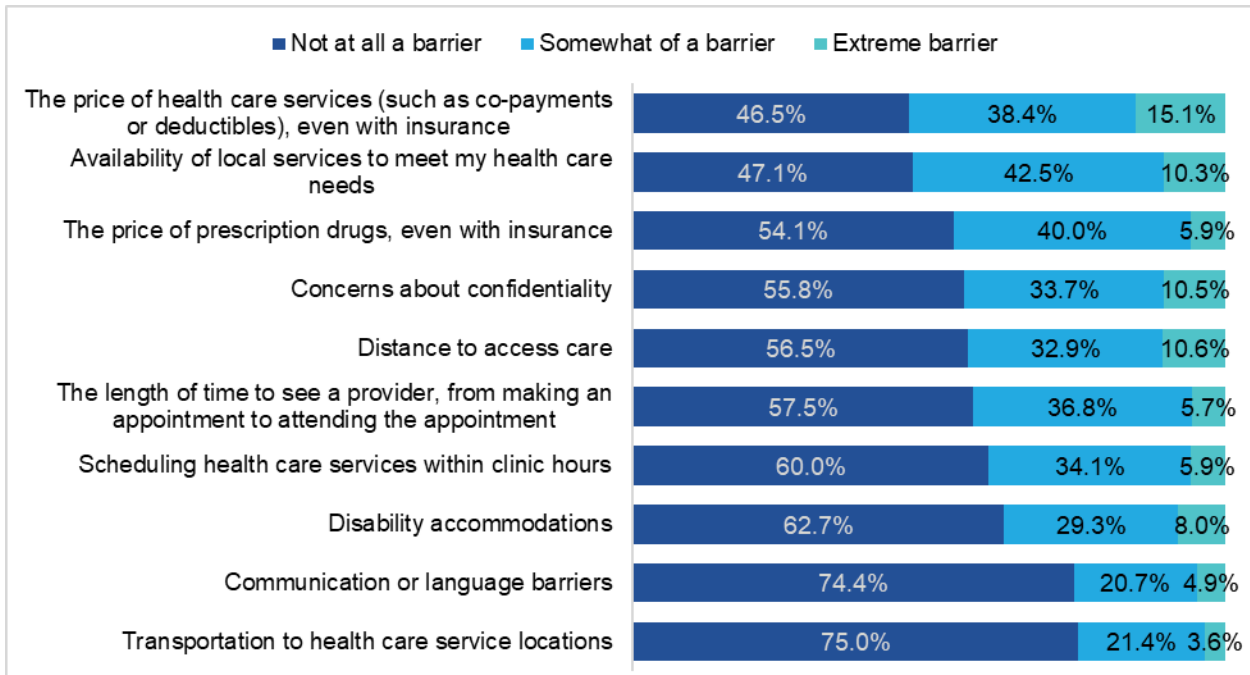
Figure 5: Medical Services in My Community, Community Health Needs Assessment, 2024



Respondent n: 67-89.

When asked about any barriers to seeking medical care, three-quarters of respondents noted that communication is not at all a barrier to care (74 percent), nor is transportation to health service locations (75 percent). However, the availability of local health care services presented at least somewhat of a barrier to 53 percent of respondents and the price of health care, even with insurance, is at least somewhat of a barrier for 54 percent of respondents (15 percent said it is an extreme barrier) (Figure 6).

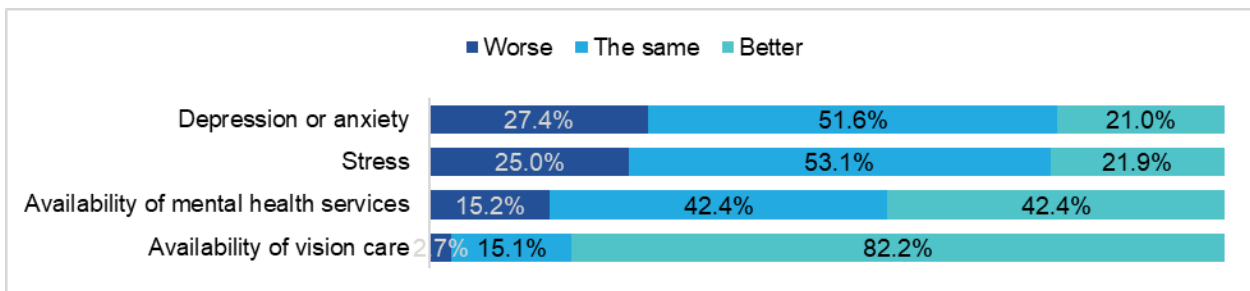
Figure 6: Barriers to Seeking Care, Community Health Needs Assessment, 2024



Respondent n: 75-87.

Respondents were asked about their perceptions of change regarding the health needs prioritized in the 2022 CHNA. Most respondents (82 percent) said the availability of vision care has improved since 2022. Forty-two percent of respondents said that the availability of mental health services has improved and 42 percent said it has stayed the same. Respondents were less encouraged about improvements in depression or anxiety and stress in their community; 25 percent said stress has worsened and 53 percent said that stress is unchanged. Similarly, 27 percent said that depression or anxiety has worsened and 52 percent said it is unchanged (Figure 7).

Figure 7: Issues from the Previous CHNA, Community Health Needs Assessment, 2024

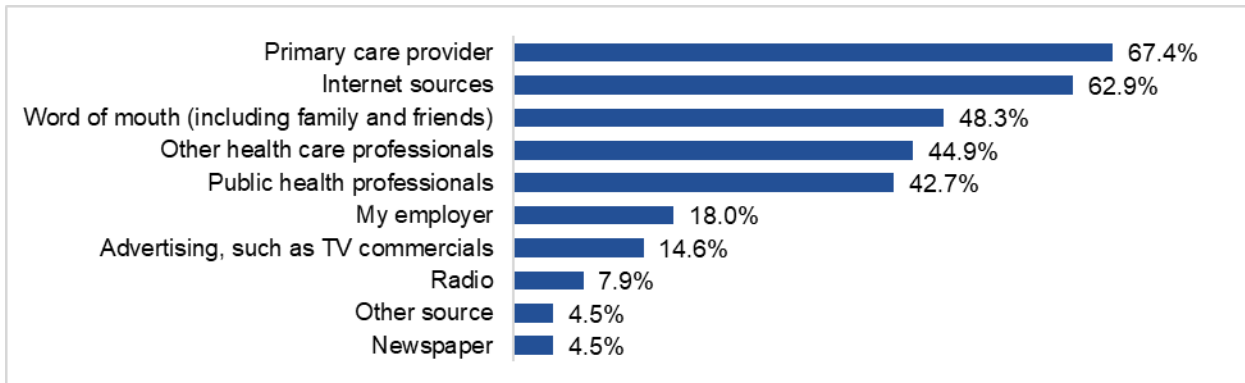


Respondent n: 62-73.

In the past year, most respondents (77 percent) had an annual physical exam, 71 percent had a vaccination, 71 percent had a dental exam, 66 percent had a blood pressure or cholesterol screening, and 64 percent had a vision exam (Appendix C).

Eighty-eight percent of respondents have a primary care provider and 67 percent receive their health information from their primary care provider. Sixty-three percent cited internet sources as their health information source and 48 percent said they receive health information from word-of-mouth sources like friends or family (Figure 8).

Figure 8: Health Information Sources, Community Health Needs Assessment, 2024

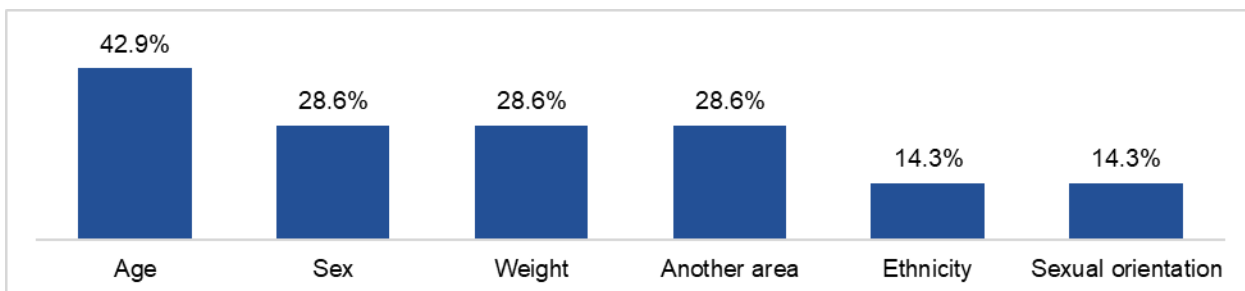


Respondent n: 89. Respondents were permitted to select more than one response.

Nearly two-thirds (64 percent) of respondents have health insurance through an employer, 31 percent have insurance through a government program like Medicaid, and 23 percent have health insurance through a private supplier (respondents were allowed to select more than one source) (Appendix C).

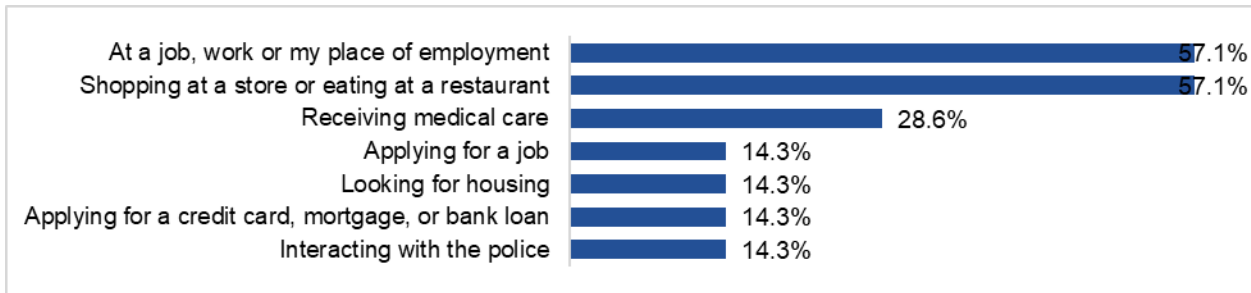
About 1 in 10 respondents said they have experienced discrimination in the past year. Of these respondents, 43 percent said they were discriminated against based on age (Figure 9). Fifty-seven percent of these respondents said they were discriminated against while they were at their job and 57 percent while shopping or eating at a restaurant (Figure 10).

Figure 9: Areas of Discrimination, Community Health Needs Assessment, 2024



Respondent n: 7.

Figure 10: Situations of Discrimination, Community Health Needs Assessment, 2024



Respondent n: 7.

When asked how difficult it is for them to pay for heating, housing, or medical care, 57 percent of respondents said it is at least slightly difficult; five percent said it is very difficult to pay for these things (Appendix C).

Significant Community Health Needs

Based on an analysis of survey data several issues were identified as issues with the greatest degree of consensus among survey respondents. Secondary data are provided in support of these findings:

- Mental health (anxiety, stress, depression) and suicide.** Nearly all respondents (98 percent) expressed some concern about mental health; 40 percent were very concerned. Regarding suicide specifically, 94 percent of respondents expressed some concern about the issue; 26 percent were very concerned. Half (51 percent) of respondents disagreed that there are adequate mental health services in their community. Mental health was identified as a priority health need in the previous CHNA conducted in 2022. When asked how this issue has changed since then, 42 percent of respondents said that the availability of mental health services has improved and 42 percent said it has stayed the same. Respondents were less encouraged about improvements in depression or anxiety and stress in their community; 25 percent said stress has worsened and 27 percent said that depression or anxiety has worsened since 2022.
- Substance misuse.** Nearly all respondents (97 percent) expressed some concern about substance misuse (alcohol, prescription drugs, tobacco or vaping, illicit or street drugs); 43 percent were very concerned and 34 percent were somewhat concerned. The adult smoking rate in Dickey County is 16 percent, which is similar to the rate in North Dakota (16 percent) and the nation overall (15 percent). The adult excessive drinking rate in Dickey County is 20 percent, which is lower than the statewide average (23 percent). However, the percentage of driving deaths due to alcohol-impairment is substantially higher in Dickey County (67 percent) than in North Dakota (39 percent) and the nation overall (26 percent).
- Access to health care.** The price of health care, even with insurance, was a barrier for 54 percent of respondents; 15 percent indicated that price was an extreme barrier. Fifty-three percent of respondents indicated the availability of local medical services was a barrier; 10 percent said it was an extreme barrier. When asked specifically about health care services, 51 percent of respondents disagreed that their community has adequate mental health services, 28 percent disagreed that their community has adequate dental care providers, and 22 percent disagreed their community has adequate vision care providers. The availability of mental health services and vision care were identified as priority health needs in the previous CHNA

in 2022. Most respondents (82 percent) said the availability of vision care has improved since 2022 and 42 percent said the availability of mental health care services has improved since then. The ratio of residents per dentist in Dickey County (1,640:1) is slightly higher (worse) than in North Dakota (1,420:1) and the nation overall (1,360:1). The ratio of residents per mental health care provider in Dickey County (2,450:1) is substantially higher (worse) than in North Dakota (420:1) and the nation (300:1). In addition, the median household income in Dickey County (\$60,250) is substantially lower than in North Dakota (\$73,959) and the U.S. (\$75,149).

- **Emotional and physical violence.** Community members indicated that they are concerned about emotional and physical violence in their community. At least half of respondents were at least somewhat concerned about cyber bullying, emotional abuse, child abuse or neglect, and intimate partner violence. About 1 in 4 respondents indicated that they were very concerned about cyber bullying (29 percent) and emotional abuse (28 percent) and 1 in 5 were very concerned with child abuse or neglect (21 percent) and intimate partner violence (18 percent).

During the January 7, 2025 community input meeting, attendees discussed survey findings, whether the survey findings aligned with their perceptions of their community's needs, and the demographics of survey respondents. Attendees discussed services available in the community as well as mental health needs and the relationship between mental health and substance abuse. Attendees also discussed health insurance coverage, noting that dentists are no longer accepting some (or all) insurances due to challenges filing claims. Attendees also noted the need for education about Medicare coverage, especially expansion plans.

Resources Potentially Available to Address Needs

Programs, resources, and organizations in the community that are potentially available to address the significant health needs were identified by key informants giving input to this process. While not exhaustive, this list draws on the experiences and knowledge base of those directly serving the community. The following potential partners may be useful resources as CHI Oaks strives to meet community needs:

Food

- Oakes Area Food Pantry
- Ellendale Community Food Pantry
- Sargent County Food Pantry
- LaMoure County Food Pantry
- SNAP, SUN Bucks – ND
- WIC – ND
- Senior Food Pack Program

Transportation

- Dickey County Transportation
- DC Transport Bus
- South Central Transit Network
- Sargent County Transportation
- Community Transit – Britton, SD
- Anywhere Transportation
- Red River Secure Transportation
- Precision/Maxime Transportation

Housing and Utilities

- Good Samaritan Society Oakes
- Oakwood 1
- ND Housing Stabilization
- Salvation Army – Eastern ND Field Representative
- ND Help for Homeowners
- ND PATH
- Section 504 Home Repair Program
- Rural Decentralized Water Systems Grant
- Dickey Sargent Housing Authority
- Supportive Services for Veteran Families
- Low Income Home Energy Assistance Program
- SENDCAA – Community Action Partnership – Jamestown Region

Homeless Shelters

- YWCA Cass Clay Emergency Shelter
- New Life Center

- Gladys Ray Shelter
- Youthworks
- Dorothy Day House

Senior Citizen Resources

- ND Senior Companions/Neighbor to Neighbor
- Basic Care Assistance Program – NDDHS
- ND Long-Term Care Ombudsman Program
- Service Payments for the Elderly and Disabled
- Senior Food Pack Program
- Family Caregiver Support Program
- Kore Cares SD
- Dickey County Senior Citizens Center

Veterans Resources

- Dickey County Veterans Service Office – Oakes

Medical Care

- Medicaid – ND
- CHIP – ND
- Health Tracks
- Region VI Right Tracks

Vision Care

- Lisbon Vision Center
- Vision Start

Prescription Services

- Prescription Assistance Program
- ND Drug Repository
- ND Rx Card

Dental Services

- NDSCS Dental Clinic
- Family Healthcare

Substance Abuse

- Alcoholics Anonymous
- Al Anon
- ShareHouse
- Region VI South Central Human Services Center
- Prairie St. Johns
- ND SUD Voucher

Mental Health

- The Kid's Therapy Center LLC
- Inspire Counseling
- Inspired Healthcare
- 988 Suicide Crisis Lifeline ND
- Grenz Counseling PLCC
- Rural Psychiatry Associates

- Churches United for the Homeless – Micah's Mission
- Stepping Stone Emergency Housing

- Forman Senior Center
- Ransom County Meals on Wheels
- Sargent County Meals on Wheels
- LaMoure Meals on Wheels
- Lisbon Senior Center
- Enderlin Senior Center
- Milnor Senior Center
- Cogswell Senior Center
- Rutland Senior Center
- LaMoure Senior Center

- Service Dogs for America
- Sargent County VSO

- Homeless Health Walk-In
- Medicare Medication Assistance Program
- Dickey County Public Health
- Women's Way

- Family Healthcare – Vision

- RX Outreach
- Good Rx
- Single Care

- ND Health Tracks
- Mission of Mercy


- 24/7 Recovery Talk – NDHHS
- Oakes Church of the Nazarene – Celebrate Recovery
- Advance in Recovery
- Holistic Recovery Services
- ND State Hospital
- Addiction and Counseling Services

- ND State Hospital
- The Village Family Service Center
- CHI Lisbon Health Senior Life Solutions
- Family Healthcare
- Prairie St. Johns

Impact of Actions Taken Since Preceding CHNA

2023- 2025 Community Health Implementation Strategy


Health Need: Availability of Mental Health Services

 Health Need: Availability of Mental Health Services	
Strategy or Program	Summary Description
1.1	<p>Expand relationship with Avera e-Emergency group to assist in providing emergency mental health services.</p> <p>FY 23 Action and Impact</p> <p>VP of Patient Care, Director of Nursing, and providers met with representatives from Prairie St. John’s in Fargo to discuss the referral process for ED patients experiencing mental health needs.</p> <p>FY23 Measures</p> <p>No measures to report at this time. Relevant metrics will be identified in FY24.</p> <p>FY24 Action and Impact</p> <p>Referrals made for behavioral health needs as screened by ED providers.</p> <p>FY24 Measures</p> <p>10 patients transferred to other health services for behavioral health needs in FY24.</p> <p>FY25: Action, Impact and Measures are pending.</p>
1.2	<p>Continue depression screenings for all clinic patients and hospital patients with referrals as needed.</p> <p>FY23 Action and Impact</p> <p>All patients 12 years of age and older are screened for depression at each appointment (minimum once per year) using the PHQ2 screening; if that is positive, they are administered the PHQ9. Adolescents receive the PHQ9-A screening with the same frequency.</p> <p>FY23 Measures</p> <p>No metrics to report at this time, this practice successfully integrated.</p> <p>FY24 Action and Impact</p> <p>All patients 12 years of age and older are screened for depression at each appointment (minimum once per year) using the PHQ2 screening; if that is positive, they are administered the PHQ9. Adolescents receive the PHQ9-A screening with the same frequency.</p> <p>FY24 Measures</p> <p>20 referrals made for clinic patients to behavioral health providers.</p> <p>FY25: Action, Impact and Measures unavailable at time of reporting.</p>


1.3	<p>Explore the potential expansion of counseling services through existing agencies or local schools.</p> <p>FY23 Action and Impact</p> <p>Strategy discontinued in FY23, included in Strategy 1.4.</p>
1.4	<p>Increase mental health awareness in local service area schools and communities.</p> <p>FY 23 Action and Impact</p> <p>Hosted speaker, Monica McConkey, who presented on Community-Based Suicide Prevention and Intervention Strategies, and Dealing with Compassion Fatigue. Information shared will be used as follow up material for community-based coalition.</p> <p>FY23 Measures</p> <p>Community-Based Suicide Prevention and Intervention Strategies:</p> <ul style="list-style-type: none"> ○ 50 in-person attendees ○ 302 video views <p>Dealing with Compassion Fatigue:</p> <ul style="list-style-type: none"> ○ 30 in-person attendees ○ 866 video views <p>FY24 Action and Impact</p> <p>Provided training in the local schools on stroke awareness and Stop the Bleed. Will re-evaluate providing mental health trainings in FY25</p> <p>FY24 Measures</p> <p>None to report at this time.</p> <p>FY25: Action, Impact and Measures unavailable at time of reporting.</p>
1.5	<p>Sponsor or provide educational opportunities for staff to increase awareness of mental health resources.</p> <p>FY23 Action and Impact</p> <p>Strategy discontinued, included in Strategy 1.4</p>
1.6	<p>Continue to provide outpatient behavioral health services in the clinic through the use of Carrington Health services.</p> <p>FY23 Action and Impact</p> <p>Referrals successfully being made upon completion of the screening tool, reported in Strategy 1.2.</p> <p>FY23 Measures</p> <p>6 patients referred to these services in FY23.</p>

<p>1.7</p>	<p>Establish a safe room in the emergency department.</p> <p>FY23 Action and Impact</p> <p>Determined true safe room is not feasible given current facility restrictions. Will be working in implementing procedures to make a safer space in FY24.</p> <p>FY23 Measures</p> <p>No measures to report.</p> <p>FY24 Action and Impact</p> <p>Completed safety/security survey of all staff and results shared with staff. Physical restrictions of ED do not allow for a true “safe room.” Duress and panic buttons acquired and distributed at key points throughout the hospital and clinic. Strategy being discontinued as no further updates are possible at this time.</p> <p>FY24 Measures</p> <p>6 panic/duress buttons installed and functioning.</p> <p>FY25: Action, Impact and Measures unavailable at time of reporting.</p>
<p>Planned Resources</p>	<p>CHI Oakes Hospital will provide clinic and hospital staff who will diagnose and assist in providing mental health referrals. Staff will also be provided to assist in the work of multiple coalitions.</p>
<p>Planned Collaborators</p>	<p>CHI Oakes Hospital will partner with Avera e-Emergency of Sioux Falls, SD, Carrington Health Services, ND Violence Prevention Coalition, Dickey County Health Coalition, and Dickey County Health District.</p>


Health Need: Availability of Vision Care

 Health Need: Availability of Vision Care	
Strategy or Program	Summary Description
CHI Oakes Hospital and Clinic	<p>CHI Oakes Hospital and Clinic will provide administrative staff who will be involved in the efforts to recruit an eye care provider to the Oakes community.</p> <p>FY23 Actions and Impact Recruitment efforts are ongoing with Oakes Enhancement, Inc. (OEI).</p> <p>FY23 Measures No measures to report.</p> <p>FY24 Actions and Impact: Recruitment efforts with Oakes Enhancement, Inc. (OEI) are complete. An optometrist was hired and began serving the community at the beginning of FY24.</p> <p>FY24 Measures: One optometrist recruited and is currently serving the community.</p> <p>FY25: Action, Impact and Measures unavailable at time of reporting.</p>
Planned Resources	CHI Oakes Hospital will provide staff in the recruitment efforts who will represent the hospital.
Planned Collaborators	CHI Oakes Hospital will collaborate with OEI and other community members.

Health Need: Depression/Anxiety

 Health Need: Depression/Anxiety	
Anticipated Impact (Goal)	Collaborate with community leaders to educate and provide support services for individuals suffering from depression and anxiety
Strategy or Program	Summary Description
CHI Oakes Hospital and Clinic	<p>FY23 Actions and Impact Strategy discontinued, included in Strategy 1.4</p>
Planned Resources	CHI Oakes Hospital will provide administrative staff to collaborate with community members, and medical personnel to diagnose anxiety and depression.
Planned Collaborators	CHI Oakes Hospital will collaborate with Oakes ministers, Growing Small Towns, and local gyms to provide healthy opportunities to de-stress through exercise and community involvement.

Health Need: Alcohol Use and Abuse

 Health Need: Alcohol Use and Abuse	
Anticipated Impact (Goal)	Provide increased education and awareness of resources available for alcohol abuse.
Strategy or Program	Summary Description
CHI Oakes Hospital and Clinic	<p>Provide educational materials to patients on alcohol use and abuse.</p> <p>Continue screening for alcohol and substance abuse for patients.</p> <p>Provide counseling services for staff members struggling with alcohol use and abuse.</p> <p>FY 23 Action and Impact</p> <p>Employee assistance program materials promoted to staff throughout the year and at open enrollment; referrals made to this program as required per Human Resources.</p> <p>FY23 Measures</p> <p>Strategy will continue, but data will not be reported due to the confidential nature of referrals.</p> <p>FY24 Action and Impact</p> <p>Employee assistance program materials promoted to staff throughout the year and at open enrollment; referrals made to this program as required per Human Resources.</p> <p>FY24 Measures</p> <p>No measures to report due to the confidential nature of referrals.</p> <p>FY25: Action, Impact and Measures unavailable at time of reporting.</p>
Planned Resources	The hospital will provide materials on health effects of alcohol use and abuse, services for staff who struggle with alcohol abuse through the Employee Assistance Program.
Planned Collaborators	The hospital will partner with the local ministers to provide referrals to alcohol recovery ministries where appropriate.

References

- Centers for Disease Control and Prevention. (2024). *CDC/ATSDR SVI: Fact sheet*. Centers for Disease Control and Prevention. https://www.atsdr.cdc.gov/placeandhealth/svi/fact_sheet/fact_sheet.html
- County Health Rankings & Roadmaps (2024). *Dickey County, North Dakota*. County Health Rankings & Roadmaps. <https://www.countyhealthrankings.org/health-data/north-dakota/Dickey?year=2024>
- Cutter, S. L., Ash, K. D., & Emrich, C. T. (2014). The geographies of community disaster resilience. *Global Environmental Change*, 29, 65–77. <https://doi.org/10.1016/j.gloenvcha.2014.08.005>
- National Risk Index. (2024). *Dickey County, North Dakota*. Federal Emergency Management Agency. <https://hazards.fema.gov/nri/>
- North Dakota Labor Market Information (2024). *North Dakota Largest Employers*. North Dakota Job Service. <https://www.ndlmi.com/vosnet/gsipub/documentView.aspx?docid=682>

Appendix B: Survey Instrument

Please note: the instrument below has been formatted to allow for mail completion and may look slightly different than presented online. The questions are the same.

COMMUNITY HEALTH NEEDS ASSESSMENT 2024

Every three years, we conduct a Community Health Needs Assessment (CHNA) to better understand health and well-being at individual and community levels. This survey will ask you a few questions about the challenges in your community, and how you think they should be approached. It will also ask a few questions about you, so we can understand more about your individual experiences as they relate to your health and well-being. There are no wrong answers to these questions, and your answers are anonymous. Your name will not be on any reports, and your answers will be grouped with those from other people who respond.

This survey will take about 10 minutes to complete. Your participation is voluntary. If you do not want to participate at all, or if you do not want to answer a particular question, that's okay. If you choose to do the survey, your answers will be kept anonymous and confidential and will be used only to answer questions related to the purpose of this study. What we learn from the survey will be used to plan communication strategies to help people in your community.

You have the option to include your email address in a gift card prize draw! Simply complete the survey, include your email address at the end, and return the survey to us for your chance to win!

Your contact information will not be used for any other purpose than the prize draw. It will not be used in analysis or reporting.

If you have any trouble with any question, please refer to the following resources:

Center for Social Research

Nancy Hodur nancy.hodur@ndsu.edu (701) 231-8621

Kaeleigh Schroeder kaeleigh.schroeder@ndsu.edu

Avi Slone avram.slone@ndsu.edu

CommonSpirit Healthy Communities liaison

Ashley Carroll ashley.carroll@commonspirit.org

Completing the survey means that you give your consent to participate in this Community Health Needs Assessment.

What is your zip code?

What is the state where you live?

What is the county where you live?

Please indicate your level of agreement for each of the following statements about the people in your community.

	Strongly Disagree	Somewhat Disagree	Neither Agree nor Disagree	Somewhat Agree	Strongly Agree	I don't know
My community is culturally diverse	<input type="checkbox"/>	<input type="checkbox"/>	<input type="checkbox"/>	<input type="checkbox"/>	<input type="checkbox"/>	<input type="checkbox"/>
People feel welcome and accepted in my community	<input type="checkbox"/>	<input type="checkbox"/>	<input type="checkbox"/>	<input type="checkbox"/>	<input type="checkbox"/>	<input type="checkbox"/>
There is a sense of civic responsibility and engagement in my community	<input type="checkbox"/>	<input type="checkbox"/>	<input type="checkbox"/>	<input type="checkbox"/>	<input type="checkbox"/>	<input type="checkbox"/>
The people in my community have a shared vision and community goals	<input type="checkbox"/>	<input type="checkbox"/>	<input type="checkbox"/>	<input type="checkbox"/>	<input type="checkbox"/>	<input type="checkbox"/>

Is there anything you would like to add about the people in your community?

Please indicate your level of agreement for each of the following statements about services in your community.

	Strongly Disagree	Somewhat Disagree	Neither Agree nor Disagree	Somewhat Agree	Strongly Agree	I don't know
My community has adequate opportunities for recreation and leisure for all ages	<input type="checkbox"/>	<input type="checkbox"/>	<input type="checkbox"/>	<input type="checkbox"/>	<input type="checkbox"/>	<input type="checkbox"/>
My community has a thriving business district with access to needed goods and services	<input type="checkbox"/>	<input type="checkbox"/>	<input type="checkbox"/>	<input type="checkbox"/>	<input type="checkbox"/>	<input type="checkbox"/>
My community provides adequate public services like snow removal, garbage collection, or recycling	<input type="checkbox"/>	<input type="checkbox"/>	<input type="checkbox"/>	<input type="checkbox"/>	<input type="checkbox"/>	<input type="checkbox"/>

My community has adequate child care services	<input type="checkbox"/>	<input type="checkbox"/>	<input type="checkbox"/>	<input type="checkbox"/>	<input type="checkbox"/>	<input type="checkbox"/>
My community has adequate senior services	<input type="checkbox"/>	<input type="checkbox"/>	<input type="checkbox"/>	<input type="checkbox"/>	<input type="checkbox"/>	<input type="checkbox"/>
My community has a quality education system	<input type="checkbox"/>	<input type="checkbox"/>	<input type="checkbox"/>	<input type="checkbox"/>	<input type="checkbox"/>	<input type="checkbox"/>
My community has adequate public transportation services	<input type="checkbox"/>	<input type="checkbox"/>	<input type="checkbox"/>	<input type="checkbox"/>	<input type="checkbox"/>	<input type="checkbox"/>
My community has adequate employment opportunities that pay a livable wage	<input type="checkbox"/>	<input type="checkbox"/>	<input type="checkbox"/>	<input type="checkbox"/>	<input type="checkbox"/>	<input type="checkbox"/>
My community has adequate law enforcement.	<input type="checkbox"/>	<input type="checkbox"/>	<input type="checkbox"/>	<input type="checkbox"/>	<input type="checkbox"/>	<input type="checkbox"/>
My community has enough affordable housing for everyone who needs it	<input type="checkbox"/>	<input type="checkbox"/>	<input type="checkbox"/>	<input type="checkbox"/>	<input type="checkbox"/>	<input type="checkbox"/>
My community has adequate access to healthy and affordable foods	<input type="checkbox"/>	<input type="checkbox"/>	<input type="checkbox"/>	<input type="checkbox"/>	<input type="checkbox"/>	<input type="checkbox"/>

Is there anything you would like to add about services in your community?

How concerned are you about each of the following in your community?

	Not concerned at all	Slightly concerned	Somewhat concerned	Very concerned	I don't know	Not applicable to my community
Substance misuse (alcohol, prescription drugs, tobacco or vaping, illicit or street drugs)	<input type="checkbox"/>	<input type="checkbox"/>	<input type="checkbox"/>	<input type="checkbox"/>	<input type="checkbox"/>	<input type="checkbox"/>
Mental health (anxiety, stress, depression)	<input type="checkbox"/>	<input type="checkbox"/>	<input type="checkbox"/>	<input type="checkbox"/>	<input type="checkbox"/>	<input type="checkbox"/>
Suicide	<input type="checkbox"/>	<input type="checkbox"/>	<input type="checkbox"/>	<input type="checkbox"/>	<input type="checkbox"/>	<input type="checkbox"/>
Access to healthy foods	<input type="checkbox"/>	<input type="checkbox"/>	<input type="checkbox"/>	<input type="checkbox"/>	<input type="checkbox"/>	<input type="checkbox"/>
Food insecurity, hunger	<input type="checkbox"/>	<input type="checkbox"/>	<input type="checkbox"/>	<input type="checkbox"/>	<input type="checkbox"/>	<input type="checkbox"/>
Poverty in my community	<input type="checkbox"/>	<input type="checkbox"/>	<input type="checkbox"/>	<input type="checkbox"/>	<input type="checkbox"/>	<input type="checkbox"/>
Sexually transmitted diseases	<input type="checkbox"/>	<input type="checkbox"/>	<input type="checkbox"/>	<input type="checkbox"/>	<input type="checkbox"/>	<input type="checkbox"/>
Crime in my community	<input type="checkbox"/>	<input type="checkbox"/>	<input type="checkbox"/>	<input type="checkbox"/>	<input type="checkbox"/>	<input type="checkbox"/>
Availability of long-term care or assisted living facilities	<input type="checkbox"/>	<input type="checkbox"/>	<input type="checkbox"/>	<input type="checkbox"/>	<input type="checkbox"/>	<input type="checkbox"/>

Availability of elder care services to support independent living, or aging in place	<input type="checkbox"/>	<input type="checkbox"/>	<input type="checkbox"/>	<input type="checkbox"/>	<input type="checkbox"/>	<input type="checkbox"/>
Obesity or overweightness	<input type="checkbox"/>	<input type="checkbox"/>	<input type="checkbox"/>	<input type="checkbox"/>	<input type="checkbox"/>	<input type="checkbox"/>
Negative effects of social media	<input type="checkbox"/>	<input type="checkbox"/>	<input type="checkbox"/>	<input type="checkbox"/>	<input type="checkbox"/>	<input type="checkbox"/>

Are there other issues in your community that you are concerned about?

How concerned are you about the following types of violence in your community?

	Not concerned at all	Slightly concerned	Somewhat concerned	Very concerned	I don't know	Not applicable to my community
Cyber bullying	<input type="checkbox"/>	<input type="checkbox"/>	<input type="checkbox"/>	<input type="checkbox"/>	<input type="checkbox"/>	<input type="checkbox"/>
Child abuse or neglect	<input type="checkbox"/>	<input type="checkbox"/>	<input type="checkbox"/>	<input type="checkbox"/>	<input type="checkbox"/>	<input type="checkbox"/>
Intimate partner violence	<input type="checkbox"/>	<input type="checkbox"/>	<input type="checkbox"/>	<input type="checkbox"/>	<input type="checkbox"/>	<input type="checkbox"/>
Emotional abuse (including: intimidation, isolation, verbal threats, economic abuse/withholding funds)	<input type="checkbox"/>	<input type="checkbox"/>	<input type="checkbox"/>	<input type="checkbox"/>	<input type="checkbox"/>	<input type="checkbox"/>
Sexual abuse or assault	<input type="checkbox"/>	<input type="checkbox"/>	<input type="checkbox"/>	<input type="checkbox"/>	<input type="checkbox"/>	<input type="checkbox"/>
Stalking	<input type="checkbox"/>	<input type="checkbox"/>	<input type="checkbox"/>	<input type="checkbox"/>	<input type="checkbox"/>	<input type="checkbox"/>
Verbal threats or harassment	<input type="checkbox"/>	<input type="checkbox"/>	<input type="checkbox"/>	<input type="checkbox"/>	<input type="checkbox"/>	<input type="checkbox"/>
Gun violence	<input type="checkbox"/>	<input type="checkbox"/>	<input type="checkbox"/>	<input type="checkbox"/>	<input type="checkbox"/>	<input type="checkbox"/>

Are there other types of violence in your community that you are concerned about?

Please indicate your level of agreement with the following issues related to medical services in your community.

	Strongly Disagree	Somewh at Disagree	Neither Agree nor Disagree	Somewh at Agree	Strongly Agree	I don't know
It is easy to get an appointment for health care services in my community	<input type="checkbox"/>	<input type="checkbox"/>	<input type="checkbox"/>	<input type="checkbox"/>	<input type="checkbox"/>	<input type="checkbox"/>
My community has adequate primary care providers and nurses	<input type="checkbox"/>	<input type="checkbox"/>	<input type="checkbox"/>	<input type="checkbox"/>	<input type="checkbox"/>	<input type="checkbox"/>
My community has adequate health care services to meet my health care needs	<input type="checkbox"/>	<input type="checkbox"/>	<input type="checkbox"/>	<input type="checkbox"/>	<input type="checkbox"/>	<input type="checkbox"/>
My community has adequate dental care providers	<input type="checkbox"/>	<input type="checkbox"/>	<input type="checkbox"/>	<input type="checkbox"/>	<input type="checkbox"/>	<input type="checkbox"/>
My community has adequate vision care providers	<input type="checkbox"/>	<input type="checkbox"/>	<input type="checkbox"/>	<input type="checkbox"/>	<input type="checkbox"/>	<input type="checkbox"/>
My community has adequate mental health services	<input type="checkbox"/>	<input type="checkbox"/>	<input type="checkbox"/>	<input type="checkbox"/>	<input type="checkbox"/>	<input type="checkbox"/>
My community has adequate access to emergency response services such as ambulance or fire fighters	<input type="checkbox"/>	<input type="checkbox"/>	<input type="checkbox"/>	<input type="checkbox"/>	<input type="checkbox"/>	<input type="checkbox"/>
I can easily navigate the health care system in my community	<input type="checkbox"/>	<input type="checkbox"/>	<input type="checkbox"/>	<input type="checkbox"/>	<input type="checkbox"/>	<input type="checkbox"/>
I receive quality health care in my community	<input type="checkbox"/>	<input type="checkbox"/>	<input type="checkbox"/>	<input type="checkbox"/>	<input type="checkbox"/>	<input type="checkbox"/>
In my community, care is well-coordinated across providers and services	<input type="checkbox"/>	<input type="checkbox"/>	<input type="checkbox"/>	<input type="checkbox"/>	<input type="checkbox"/>	<input type="checkbox"/>

Do you have any other concerns about access to health care services in your community?

Which preventative health care measures have you received in the last year? Select all that apply.

- Vaccinations
- Annual physical exam
- Mammogram
- Colonoscopy
- Blood pressure or cholesterol screening
- Counseling for tobacco use, alcohol use, weight loss, or behavioral health
- Depression screening
- STD/STI screening
- Vision exam
- Dental exam/annual checkup

To what degree are each of the following a barrier to your ability to access health care services?

	Not at all a barrier	Somewhat of a barrier	Extreme barrier	I don't know
Transportation to health services locations	<input type="checkbox"/>	<input type="checkbox"/>	<input type="checkbox"/>	<input type="checkbox"/>
Availability of local services to meet my health care needs	<input type="checkbox"/>	<input type="checkbox"/>	<input type="checkbox"/>	<input type="checkbox"/>
Ability to see the same provider over time	<input type="checkbox"/>	<input type="checkbox"/>	<input type="checkbox"/>	<input type="checkbox"/>
Scheduling health care services within clinic hours	<input type="checkbox"/>	<input type="checkbox"/>	<input type="checkbox"/>	<input type="checkbox"/>
The price of prescription drugs, even with insurance	<input type="checkbox"/>	<input type="checkbox"/>	<input type="checkbox"/>	<input type="checkbox"/>
The price of health care services (such as co-payments or deductibles), even with health insurance	<input type="checkbox"/>	<input type="checkbox"/>	<input type="checkbox"/>	<input type="checkbox"/>
Communication or language barriers	<input type="checkbox"/>	<input type="checkbox"/>	<input type="checkbox"/>	<input type="checkbox"/>
Difficulty using or accessing technology to communicate with provider or system	<input type="checkbox"/>	<input type="checkbox"/>	<input type="checkbox"/>	<input type="checkbox"/>
Concerns about confidentiality	<input type="checkbox"/>	<input type="checkbox"/>	<input type="checkbox"/>	<input type="checkbox"/>
Disability accommodations	<input type="checkbox"/>	<input type="checkbox"/>	<input type="checkbox"/>	<input type="checkbox"/>
Health insurance coverage	<input type="checkbox"/>	<input type="checkbox"/>	<input type="checkbox"/>	<input type="checkbox"/>
The length of time to see a provider, from making an appointment to attending the appointment	<input type="checkbox"/>	<input type="checkbox"/>	<input type="checkbox"/>	<input type="checkbox"/>
Distance to access care	<input type="checkbox"/>	<input type="checkbox"/>	<input type="checkbox"/>	<input type="checkbox"/>

Are there other barriers to your ability to access health care in your community?

Do you currently have a primary care doctor?

- Yes
- No
- Prefer not to respond

Where do you find out about health information? Select all that apply.

- Primary care provider
- Other health care providers
- Public health professionals
- Internet sources
- Word of mouth
- Advertising, such as TV commercials
- My employer
- Newspaper
- Radio
- Other (please specify _____)

What type of health insurance coverage do you currently have? Select all that apply.

- Commercial private health insurance (coverage purchased by you or your employer)
- Medicare
- Medicaid etc.)
- Indian Health Service (IHS)
- Military (Tricare, Champus, VA)
- Other (please specify) _____
- No health insurance (**GO TO Q3.7**)
- Prefer not to say

Why do you NOT have health insurance? Select all that apply.

DO NOT RESPOND IF YOU DO HAVE HEALTH INSURANCE

- Too expensive
- Too difficult or complex to obtain health insurance
- I have a pre-existing condition that is not covered
- I am healthy and do not need insurance
- I do not qualify for Medicaid
- I was disenrolled from Medicaid
- Another reason (please specify) _____
- Prefer not to say

What specific health care services, if any, do you think should be added locally?

Did you move to your community in the past year?

- Yes
- No (**GO TO Q4.3**)
- Prefer not to respond (**GO TO Q4.3**)

How difficult was it to do the following?

	Not difficult at all	Slightly difficult	Somewhat difficult	Very difficult	I don't know/I'm not sure	Not applicable to me
Enroll children in school	<input type="checkbox"/>	<input type="checkbox"/>	<input type="checkbox"/>	<input type="checkbox"/>	<input type="checkbox"/>	<input type="checkbox"/>
Find housing	<input type="checkbox"/>	<input type="checkbox"/>	<input type="checkbox"/>	<input type="checkbox"/>	<input type="checkbox"/>	<input type="checkbox"/>
Find healthcare	<input type="checkbox"/>	<input type="checkbox"/>	<input type="checkbox"/>	<input type="checkbox"/>	<input type="checkbox"/>	<input type="checkbox"/>
Find a job	<input type="checkbox"/>	<input type="checkbox"/>	<input type="checkbox"/>	<input type="checkbox"/>	<input type="checkbox"/>	<input type="checkbox"/>
Find childcare	<input type="checkbox"/>	<input type="checkbox"/>	<input type="checkbox"/>	<input type="checkbox"/>	<input type="checkbox"/>	<input type="checkbox"/>

Have you experienced discrimination in the past 12 months?

- Yes
- No (**GO TO Q4.6**)
- Prefer not to respond (**GO TO Q4.6**)

In what area(s) have you experienced discrimination? Select all that apply.

- | | |
|---|--|
| <input type="checkbox"/> Race | <input type="checkbox"/> Weight |
| <input type="checkbox"/> Ethnicity | <input type="checkbox"/> Disability |
| <input type="checkbox"/> Sex | <input type="checkbox"/> Religion |
| <input type="checkbox"/> Gender identity | <input type="checkbox"/> Another area (specify: _____) |
| <input type="checkbox"/> Sexual orientation | <input type="checkbox"/> _____) |
| <input type="checkbox"/> Age | <input type="checkbox"/> Prefer not to say |

In which of the following situations did you experience discrimination? Select all that apply.

- Applying for a job
- At a job, work or my place of employment
- Receiving medical care
- Looking for housing
- Applying for a credit card, bank loan, or mortgage
- Shopping at a store or eating at a restaurant
- Applying for social services or public assistance
- Interacting with the police
- Appearing in court
- Another area (specify) _____
- Prefer not to say

How difficult is it for you to pay for heating, housing, or medical care?

- Not difficult at all
- Slightly difficult
- Somewhat difficult
- Very difficult
- I don't know/I'm not sure

In the last month, have you had to sleep outside, in a shelter, in your car, at a family member or friend's house, or in a place not meant for sleeping?

- Yes
- No
- Prefer not to say

What is your age?**What is your gender?**

- Male
- Female
- Non-binary/third gender
- Other (please describe: _____)
- Prefer not to say

Which one of these groups best represents your race? Select all that apply.

- American Indian or Alaska Native
- Black or African American
- Asian
- Native Hawaiian or Pacific Islander
- Two or more races
- White
- Other (please describe: _____)

Do you identify as Hispanic, Latine, or of Spanish origin?

- Yes
- No
- Prefer not to say

What is your estimated household income?

- Less than \$15,000
- \$15,000 - \$24,999
- \$25,000 - \$49,999
- \$50,000 - \$74,999
- \$75,000 - \$99,999
- \$100,000 - \$149,999
- \$150,000 and over
- Prefer not to say

What is the highest level of education you have completed?

- | | |
|--|--|
| <input type="checkbox"/> Less than 9 th Grade | <input type="checkbox"/> Associate's degree |
| <input type="checkbox"/> 9 th to 12 th Grade, no diploma | <input type="checkbox"/> Bachelor's degree |
| <input type="checkbox"/> High school graduate or equivalent | <input type="checkbox"/> Graduate or professional degree |
| <input type="checkbox"/> Some college, no degree | <input type="checkbox"/> Prefer not to say |

Which of these categories best describes your employment status?

- | | |
|---|--|
| <input type="checkbox"/> Employed full time | <input type="checkbox"/> Retired |
| <input type="checkbox"/> Employed part time | <input type="checkbox"/> Student |
| <input type="checkbox"/> Unemployed | <input type="checkbox"/> Disabled |
| | <input type="checkbox"/> Prefer not to say |

What is your marital status?

- Single
- Married or in a domestic partnership
- Divorced or separated
- Widowed
- Prefer not to say

How many people live in your household? Use numbers only. If you live alone, put "1".

Do you have access to reliable internet in your home?

- Yes
- No
- Prefer not to say

How did you access this survey?

- Hospital or public health website
- Hospital or public health social media page (e.g., Facebook)
- Hospital or public health employee directly
- Economic development website or social media
- Church bulletin
- Other website or social media page (please specify) _____
- Newsletter (please specify from where) _____
- Newspaper advertisement
- Word of mouth
- Direct email (please specify from where) _____
- Another way (please specify) _____

Please provide any additional comments you think we could use to improve the delivery of health care in your community. If you need more space, please attach additional paper.

If you would like to enter our prize drawing, please write your email address below!

Thanks for completing our survey!
We appreciate your time, and your responses will help inform health care decisions in your community.

If you entered your name to be included in our draw, we'll contact the winners BY EMAIL once the survey has closed. Good luck!

Appendix C: Survey Frequencies

Completing the survey means that you give your consent to participate in this Community Health Needs Assessment.					
		Frequency	Percent	Valid Percent	Cumulative Percent
Valid	I consent	91	100.0	100.0	100.0

What is your zip code?					
		Frequency	Percent	Valid Percent	Cumulative Percent
Valid		6	6.6	6.6	6.6
	56284	1	1.1	1.1	7.7
	58027	3	3.3	3.3	11.0
	58054	2	2.2	2.2	13.2
	58401	4	4.4	4.4	17.6
	58433	1	1.1	1.1	18.7
	58436	6	6.6	6.6	25.3
	58458	1	1.1	1.1	26.4
	58471	3	3.3	3.3	29.7
	58474	60	65.9	65.9	95.6
	58475	1	1.1	1.1	96.7
	58490	1	1.1	1.1	97.8
	58574	1	1.1	1.1	98.9
	58801	1	1.1	1.1	100.0
	Total	91	100.0	100.0	

What is the state in which you live?					
		Frequency	Percent	Valid Percent	Cumulative Percent
Valid	North Dakota	91	100.0	100.0	100.0

What is the county where you live in North Dakota?					
		Frequency	Percent	Valid Percent	Cumulative Percent
Valid	Dickey	79	86.8	86.8	86.8
	Emmons	3	3.3	3.3	90.1
	LaMoure	3	3.3	3.3	93.4

	Ransom	4	4.4	4.4	97.8
	Richland	1	1.1	1.1	98.9
	Sargent	1	1.1	1.1	100.0
Total		91	100.0	100.0	

People in Your Community

		Strongly disagree	Somewhat disagree	Neither agree nor disagree	Somewhat agree	Strongly agree	Total
Please indicate your level of agreement for each of the following statements about the people in your community. - My community is culturally diverse	Count	2	21	25	28	12	88
	Row N %	2.3%	23.9%	28.4%	31.8%	13.6%	100.0%
Please indicate your level of agreement for each of the following statements about the people in your community. - People feel welcome and accepted in my community	Count	1	6	5	49	28	89
	Row N %	1.1%	6.7%	5.6%	55.1%	31.5%	100.0%
Please indicate your level of agreement for each of the following statements about the people in your community. - There is a sense of civic responsibility and engagement in my community	Count	1	5	12	44	26	88
	Row N %	1.1%	5.7%	13.6%	50.0%	29.5%	100.0%
Please indicate your level of agreement for each of the following statements about the people in your community. - The people in my community have a shared vision and community goals	Count	1	7	19	40	22	89
	Row N %	1.1%	7.9%	21.3%	44.9%	24.7%	100.0%

		Disagree	Neither agree nor disagree	Agree	Total
RECODE: People in your community - My community is culturally diverse	Count	23	25	40	88
	Row N %	26.1%	28.4%	45.5%	100.0%
RECODE: People in your community - People feel welcome and accepted in my community	Count	7	5	77	89
	Row N %	7.9%	5.6%	86.5%	100.0%
RECODE: People in your community - There is a sense of civic responsibility and engagement in my community	Count	6	12	70	88
	Row N %	6.8%	13.6%	79.5%	100.0%
RECODE: People in your community - The people in my community have a shared vision and community goals	Count	8	19	62	89
	Row N %	9.0%	21.3%	69.7%	100.0%

Services in Your Community

		Strongly disagree	Somewhat disagree	Neither agree nor disagree	Somewhat agree	Strongly agree	Total
Please indicate your level of agreement for each of the following statements about services in your community. - My community has adequate opportunities for recreation and leisure for all ages	Count	9	21	12	33	15	90
	Row N %	10.0%	23.3%	13.3%	36.7%	16.7%	100.0%
Please indicate your level of agreement for each of the following statements about services in your community. - My community has a thriving business district with access to needed goods and services	Count	2	10	11	38	28	89
	Row N %	2.2%	11.2%	12.4%	42.7%	31.5%	100.0%
Please indicate your level of agreement for each of the following statements about services in your community. - My community provides adequate public services like snow removal, garbage collection, or recycling	Count	1	7	8	35	40	91
	Row N %	1.1%	7.7%	8.8%	38.5%	44.0%	100.0%
Please indicate your level of agreement for each of the following statements about services in your community. - My community has adequate child care services	Count	18	14	8	32	13	85
	Row N %	21.2%	16.5%	9.4%	37.6%	15.3%	100.0%
Please indicate your level of agreement for each of the following statements about services in your community. - My community has adequate senior services	Count	3	7	15	41	23	89
	Row N %	3.4%	7.9%	16.9%	46.1%	25.8%	100.0%

		Strongly disagree	Somewhat disagree	Neither agree nor disagree	Somewhat agree	Strongly agree	Total
Please indicate your level of agreement for each of the following statements about services in your community. - My community has a quality education system	Count	3	8	18	31	29	89
	Row N %	3.4%	9.0%	20.2%	34.8%	32.6%	100.0%
Please indicate your level of agreement for each of the following statements about services in your community. - My community has adequate public transportation services	Count	10	19	12	31	15	87
	Row N %	11.5%	21.8%	13.8%	35.6%	17.2%	100.0%
Please indicate your level of agreement for each of the following statements about services in your community. - My community has adequate employment opportunities that pay a livable wage	Count	4	16	18	33	18	89
	Row N %	4.5%	18.0%	20.2%	37.1%	20.2%	100.0%
Please indicate your level of agreement for each of the following statements about services in your community. - My community has adequate law enforcement	Count	2	7	7	38	36	90
	Row N %	2.2%	7.8%	7.8%	42.2%	40.0%	100.0%
Please indicate your level of agreement for each of the following statements about services in your community. - My community has enough affordable housing for everyone who needs it	Count	12	23	14	28	9	86
	Row N %	14.0%	26.7%	16.3%	32.6%	10.5%	100.0%
Please indicate your level of agreement for each of the following statements about services in your community. - My community has adequate access to healthy and affordable foods	Count	7	26	14	29	15	91
	Row N %	7.7%	28.6%	15.4%	31.9%	16.5%	100.0%

		Disagree	Neither agree nor disagree	Agree	Total
RECODE: Services in your community - My community has adequate opportunities for recreation and leisure for all ages	Count	30	12	48	90
	Row N %	33.3%	13.3%	53.3%	100.0%
RECODE: Services in your community - My community has a thriving business district with access to needed goods and services	Count	12	11	66	89
	Row N %	13.5%	12.4%	74.2%	100.0%
RECODE: Services in your community - My community provides adequate public services like snow removal, garbage collection, or recycling	Count	8	8	75	91
	Row N %	8.8%	8.8%	82.4%	100.0%
RECODE: Services in your community - My community has adequate child care services	Count	32	8	45	85
	Row N %	37.6%	9.4%	52.9%	100.0%
RECODE: Services in your community - My community has adequate senior services	Count	10	15	64	89
	Row N %	11.2%	16.9%	71.9%	100.0%
RECODE: Services in your community. - My community has a quality education system	Count	11	18	60	89
	Row N %	12.4%	20.2%	67.4%	100.0%
RECODE: Services in your community. - My community has adequate public transportation services	Count	29	12	46	87
	Row N %	33.3%	13.8%	52.9%	100.0%
RECODE: Services in your community. - My community has adequate employment opportunities that pay a livable wage	Count	20	18	51	89
	Row N %	22.5%	20.2%	57.3%	100.0%
RECODE: Services in your community. - My community has adequate law enforcement	Count	9	7	74	90
	Row N %	10.0%	7.8%	82.2%	100.0%
RECODE: Services in your community. - My community has enough affordable housing for everyone who needs it	Count	35	14	37	86
	Row N %	40.7%	16.3%	43.0%	100.0%
RECODE: Services in your community. - My community has adequate access to healthy and affordable foods	Count	33	14	44	91
	Row N %	36.3%	15.4%	48.4%	100.0%

Community Concerns

		Not concerned at all	Slightly concerned	Somewhat concerned	Very concerned	Total
How concerned are you about each of the following in your community? - Substance misuse (alcohol, prescription drugs, tobacco or vaping, illicit or street drugs)	Count	3	17	30	38	88
	Row N %	3.4%	19.3%	34.1%	43.2%	100.0%
How concerned are you about each of the following in your community? - Mental health (anxiety, stress, depression)	Count	2	16	34	35	87
	Row N %	2.3%	18.4%	39.1%	40.2%	100.0%
How concerned are you about each of the following in your community? - Suicide	Count	5	23	37	23	88
	Row N %	5.7%	26.1%	42.0%	26.1%	100.0%
How concerned are you about each of the following in your community? - Access to healthy foods	Count	11	14	39	25	89
	Row N %	12.4%	15.7%	43.8%	28.1%	100.0%
How concerned are you about each of the following in your community? - Food insecurity or hunger	Count	9	21	44	11	85
	Row N %	10.6%	24.7%	51.8%	12.9%	100.0%
How concerned are you about each of the following in your community? - Poverty in my community	Count	9	27	31	15	82
	Row N %	11.0%	32.9%	37.8%	18.3%	100.0%
How concerned are you about each of the following in your community? - Sexually transmitted diseases or infections	Count	25	21	15	6	67
	Row N %	37.3%	31.3%	22.4%	9.0%	100.0%
How concerned are you about each of the following in your community? - Crime in my community	Count	17	27	32	12	88
	Row N %	19.3%	30.7%	36.4%	13.6%	100.0%
How concerned are you about each of the following in your community? - Availability of long-term care or assisted living facilities	Count	17	16	29	25	87
	Row N %	19.5%	18.4%	33.3%	28.7%	100.0%
How concerned are you about each of the following in your community? - Availability of elder care services to support independent living, or aging in place	Count	12	23	26	26	87
	Row N %	13.8%	26.4%	29.9%	29.9%	100.0%
How concerned are you about each of the following in your community? - Obesity or overweightness	Count	4	22	39	22	87
	Row N %	4.6%	25.3%	44.8%	25.3%	100.0%

Violence Concerns in Community

		Not concerned at all	Slightly concerned	Somewhat concerned	Very concerned	Total
How concerned are you about the following types of violence in your community? - Cyber bullying	Count	3	21	33	23	80
	Row N %	3.8%	26.3%	41.3%	28.8%	100.0%
How concerned are you about the following types of violence in your community? - Child abuse or neglect	Count	11	27	27	17	82
	Row N %	13.4%	32.9%	32.9%	20.7%	100.0%
How concerned are you about the following types of violence in your community? - Intimate partner violence	Count	15	23	26	14	78
	Row N %	19.2%	29.5%	33.3%	17.9%	100.0%
How concerned are you about the following types of violence in your community? - Emotional abuse (including intimidation or isolation)	Count	12	24	24	23	83
	Row N %	14.5%	28.9%	28.9%	27.7%	100.0%
How concerned are you about the following types of violence in your community? - Sexual abuse or assault	Count	16	23	33	10	82
	Row N %	19.5%	28.0%	40.2%	12.2%	100.0%
How concerned are you about the following types of violence in your community? - Stalking	Count	24	22	20	12	78
	Row N %	30.8%	28.2%	25.6%	15.4%	100.0%
How concerned are you about the following types of violence in your community? - Verbal threats or harassment	Count	13	30	25	13	81
	Row N %	16.0%	37.0%	30.9%	16.0%	100.0%
How concerned are you about the following types of violence in your community? - Gun violence	Count	27	29	18	9	83
	Row N %	32.5%	34.9%	21.7%	10.8%	100.0%

Medical Services in Your Community

		Strongly disagree	Somewhat disagree	Neither agree nor disagree	Somewhat agree	Strongly agree	Total
Please indicate your level of agreement with the following issues related to medical services in your community. - It is easy to get an appointment for health care services in my community	Count	2	9	9	39	30	89
	Row N %	2.2%	10.1%	10.1%	43.8%	33.7%	100.0%
Please indicate your level of agreement with the following issues related to medical services in your community. - My community has adequate primary care providers and nurses	Count	2	11	10	36	28	87
	Row N %	2.3%	12.6%	11.5%	41.4%	32.2%	100.0%
Please indicate your level of agreement with the following issues related to medical services in your community. - My community has adequate health care services to meet my health care needs	Count	2	12	14	33	28	89
	Row N %	2.2%	13.5%	15.7%	37.1%	31.5%	100.0%
Please indicate your level of agreement with the following issues related to medical services in your community. - My community has adequate dental care providers	Count	8	16	11	27	25	87
	Row N %	9.2%	18.4%	12.6%	31.0%	28.7%	100.0%
Please indicate your level of agreement with the following issues related to medical services in your community. - My community has adequate vision care providers	Count	3	16	9	30	28	86
	Row N %	3.5%	18.6%	10.5%	34.9%	32.6%	100.0%
Please indicate your level of agreement with the following issues related to medical services in your community. - My community has adequate mental health services	Count	19	22	12	22	6	81
	Row N %	23.5%	27.2%	14.8%	27.2%	7.4%	100.0%
Please indicate your level of agreement with the following issues related to medical services in your community. - My community has adequate access to emergency response services such as ambulance or fire fighters	Count	2	1	5	27	55	90
	Row N %	2.2%	1.1%	5.6%	30.0%	61.1%	100.0%
Please indicate your level of agreement with the following issues related to medical services in your community. - I can easily navigate the health care system in my community	Count	0	8	11	25	42	86
	Row N %	0.0%	9.3%	12.8%	29.1%	48.8%	100.0%
Please indicate your level of agreement with the following issues related to medical services in your	Count	2	8	8	31	40	89
	Row N %	2.2%	9.0%	9.0%	34.8%	44.9%	100.0%

		Strongly disagree	Somewhat disagree	Neither agree nor disagree	Somewhat agree	Strongly agree	Total
community. - I receive quality health care in my community							
Please indicate your level of agreement with the following issues related to medical services in your community. - In my community, care is well coordinated across providers and services	Count	7	9	12	35	23	86
	Row N %	8.1%	10.5%	14.0%	40.7%	26.7%	100.0%

		Disagree	Neither agree nor disagree	Agree	Total
RECODE: Medical services in your community. - It is easy to get an appointment for health care services in my community	Count	11	9	69	89
	Row N %	12.4%	10.1%	77.5%	100.0%
RECODE: Medical services in your community. - My community has adequate primary care providers and nurses	Count	13	10	64	87
	Row N %	14.9%	11.5%	73.6%	100.0%
RECODE: Medical services in your community. - My community has adequate health care services to meet my health care needs	Count	14	14	61	89
	Row N %	15.7%	15.7%	68.5%	100.0%
RECODE: Medical services in your community. - My community has adequate dental care providers	Count	24	11	52	87
	Row N %	27.6%	12.6%	59.8%	100.0%
RECODE: Medical services in your community. - My community has adequate vision care providers	Count	19	9	58	86
	Row N %	22.1%	10.5%	67.4%	100.0%
RECODE: Medical services in your community. - My community has adequate mental health services	Count	41	12	28	81
	Row N %	50.6%	14.8%	34.6%	100.0%
RECODE: Medical services in your community. - My community has adequate access to emergency response services such as ambulance or fire fighters	Count	3	5	82	90
	Row N %	3.3%	5.6%	91.1%	100.0%
RECODE: Medical services in your community. - I can easily navigate the health care system in my community	Count	8	11	67	86
	Row N %	9.3%	12.8%	77.9%	100.0%
RECODE: Medical services in your community. - I receive quality health care in my community	Count	10	8	71	89
	Row N %	11.2%	9.0%	79.8%	100.0%
RECODE: Medical services in your community. - In my community, care is well coordinated across providers and services	Count	16	12	58	86
	Row N %	18.6%	14.0%	67.4%	100.0%

Last CHNA Needs

		Much worse	Somewhat worse	About the same	Somewhat better	Much better	Total
Three years ago, the last Community Health Needs Assessment identified the following issues as community health needs. To what degree do you believe these issues have changed? – Availability of mental health services	Count	3	7	28	22	6	66
	Row N %	4.5%	10.6%	42.4%	33.3%	9.1%	100.0%
Three years ago, the last Community Health Needs Assessment identified the following issues as community health needs. To what degree do you believe these issues have changed? - Stress	Count	2	14	34	11	3	64
	Row N %	3.1%	21.9%	53.1%	17.2%	4.7%	100.0%
Three years ago, the last Community Health Needs Assessment identified the following issues as community health needs. To what degree do you believe these issues have changed? - Depression	Count	3	14	32	8	5	62
	Row N %	4.8%	22.6%	51.6%	12.9%	8.1%	100.0%
Three years ago, the last Community Health Needs Assessment identified the following issues as community health needs. To what degree do you believe these issues have changed? – Availability of vision care	Count	1	1	11	30	30	73
	Row N %	1.4%	1.4%	15.1%	41.1%	41.1%	100.0%

		Worse	The same	Better	Total
RECODE: Previous issues – Availability of mental health services	Count	10	28	28	66
	Row N %	15.2%	42.4%	42.4%	100.0%
RECODE: Previous issues – Stress	Count	16	34	14	64
	Row N %	25.0%	53.1%	21.9%	100.0%
RECODE: Previous issues – Depression	Count	17	32	13	62
	Row N %	27.4%	51.6%	21.0%	100.0%
RECODE: Previous issues – Availability of vision care	Count	2	11	60	73
	Row N %	2.7%	15.1%	82.2%	100.0%

Preventative Health Care Measures

Multiple Response	Valid		Missing	
	N	Percent	N	Percent
	MRQ5.1 ^a	88	100.0%	0

MRQ5.1 Frequencies				
		Responses		Percent of Cases
		N	Percent	
MRQ5.1 ^a	Which of the following preventative health care measures have you received in the last year? Vaccinations	62	15.1%	70.5%
	Which of the following preventative health care measures have you received in the last year? Annual physical exam	68	16.6%	77.3%
	Which of the following preventative health care measures have you received in the last year? Mammogram	40	9.8%	45.5%
	Which of the following preventative health care measures have you received in the last year? Colonoscopy	16	3.9%	18.2%
	Which of the following preventative health care measures have you received in the last year? Blood pressure or cholesterol screening	58	14.1%	65.9%
	Which of the following preventative health care measures have you received in the last year? Counseling for tobacco use, alcohol dependency, weight loss, behavioral health	9	2.2%	10.2%
	Which of the following preventative health care measures have you received in the last year? Depression screening	33	8.0%	37.5%
	Which of the following preventative health care measures have you received in the last year? STD/STI Screening	6	1.5%	6.8%
	Which of the following preventative health care measures have you received in the last year? Vision exam or annual checkup	56	13.7%	63.6%
	Which of the following preventative health care measures have you received in the last year? Dental exam or annual checkup	62	15.1%	70.5%
	Total		410	100.0%
a. Dichotomy group tabulated at value 1.				

		Not at all a barrier	Somewhat of a barrier	Extreme barrier	Total
To what degree are each of the following issues a barrier to your ability to access health care services? - Transportation to health care service locations	Count	63	18	3	84
	Row N %	75.0%	21.4%	3.6%	100.0%
To what degree are each of the following issues a barrier to your ability to access health care services? - Distance to access care	Count	48	28	9	85
	Row N %	56.5%	32.9%	10.6%	100.0%
To what degree are each of the following issues a barrier to your ability to access health care services? - Concerns about confidentiality	Count	48	29	9	86
	Row N %	55.8%	33.7%	10.5%	100.0%
To what degree are each of the following issues a barrier to your ability to access health care services? - Availability of local services to meet my health care needs	Count	41	37	9	87
	Row N %	47.1%	42.5%	10.3%	100.0%
To what degree are each of the following issues a barrier to your ability to access health care services? - Communication or language barriers	Count	61	17	4	82
	Row N %	74.4%	20.7%	4.9%	100.0%
To what degree are each of the following issues a barrier to your ability to access health care services? - Disability accommodations	Count	47	22	6	75
	Row N %	62.7%	29.3%	8.0%	100.0%
To what degree are each of the following issues a barrier to your ability to access health care services? - Scheduling health care services within clinic hours	Count	51	29	5	85
	Row N %	60.0%	34.1%	5.9%	100.0%
To what degree are each of the following issues a barrier to your ability to access health care services? - The length of time to see a provider, from making an appointment to attending the appointment	Count	50	32	5	87
	Row N %	57.5%	36.8%	5.7%	100.0%
To what degree are each of the following issues a barrier to your ability to access health care services? - The price of prescription drugs, even with insurance	Count	46	34	5	85
	Row N %	54.1%	40.0%	5.9%	100.0%
To what degree are each of the following issues a barrier to your ability to access health care services? - The price of health care services (such as co-payments or deductibles), even with insurance	Count	40	33	13	86
	Row N %	46.5%	38.4%	15.1%	100.0%

Do you currently have a primary care doctor?					
		Frequency	Percent	Valid Percent	Cumulative Percent
Valid	Yes	78	85.7	87.6	87.6
	No	11	12.1	12.4	100.0
	Total	89	97.8	100.0	
Missing	Prefer not to respond	1	1.1		
	System	1	1.1		
	Total	2	2.2		
Total		91	100.0		

Multiple Response						
	Cases					
	Valid		Missing		Total	
	N	Percent	N	Percent	N	Percent
MRQ5.5 ^a	89	97.8%	2	2.2%	91	100.0%
a. Dichotomy group tabulated at value 1.						

MRQ5.5 Frequencies				
		Responses		Percent of Cases
		N	Percent	
MRQ5.5 ^a	Where do you find out about health information? Other health care professionals	40	14.2%	44.9%
	Where do you find out about health information? Primary care provider	60	21.4%	67.4%
	Where do you find out about health information? Public health professionals	38	13.5%	42.7%
	Where do you find out about health information? Internet sources	56	19.9%	62.9%
	Where do you find out about health information? Word of mouth (including family and friends)	43	15.3%	48.3%
	Where do you find out about health information? Advertising, such as TV commercials	13	4.6%	14.6%
	Where do you find out about health information? My employer	16	5.7%	18.0%
	Where do you find out about health information? Newspaper	4	1.4%	4.5%
	Where do you find out about health information? Radio	7	2.5%	7.9%
	Where do you find out about health information? Other source	4	1.4%	4.5%
Total		281	100.0%	315.7%
a. Dichotomy group tabulated at value 1.				

Where do you find out about health information? Other text
Health care professionals on TikTok
scholarly journals
Social media

Multiple Response						
Case Summary						
	Cases		Missing		Total	
	Valid		N	Percent	N	Percent
	N	Percent	N	Percent	N	Percent
MRQ5.6 ^a	91	100.0%	0	0.0%	91	100.0%
a. Dichotomy group tabulated at value 1.						

MRQ5.6 Frequencies				
		Responses		Percent of Cases
		N	Percent	
MRQ5.6 ^a	What type of health insurance coverage do you have? (Select all that apply) - Selected Choice Insurance through employer (either your own or a family member's)	58	51.8%	63.7%
	What type of health insurance coverage do you have? (Select all that apply) - Selected Choice Private health insurance (coverage purchased by you)	21	18.8%	23.1%
	What type of health insurance coverage do you have? (Select all that apply) - Selected Choice Government program (Medicare, Medicaid, etc.)	28	25.0%	30.8%
	What type of health insurance coverage do you have? (Select all that apply) - Selected Choice Military (Tricare, Champus, VA)	1	0.9%	1.1%
	What type of health insurance coverage do you have? (Select all that apply) - Selected Choice Other (please specify)	3	2.7%	3.3%
	What type of health insurance coverage do you have? (Select all that apply) - Selected Choice No health insurance	1	0.9%	1.1%
Total		112	100.0%	123.1%

a. Dichotomy group tabulated at value 1.

SOCIAL HARDSHIP AND DISCRIMINATION

Did you move to your community in the past year?					
		Frequency	Percent	Valid Percent	Cumulative Percent
Valid	Yes	2	2.2	2.2	2.2
	No	88	96.7	97.8	100.0
	Total	90	98.9	100.0	
Missing	System	1	1.1		
Total		91	100.0		

		Not difficult at all	Slightly difficult	Somewhat difficult	Very difficult	Total
How difficult was it to do the following things? - Enroll children in school	Count	1	0	0	0	1
	Row N %	100.0%	0.0%	0.0%	0.0%	100.0%
How difficult was it to do the following things? - Find housing	Count	1	0	0	0	1
	Row N %	100.0%	0.0%	0.0%	0.0%	100.0%
How difficult was it to do the following things? - Find health care	Count	1	0	0	0	1
	Row N %	100.0%	0.0%	0.0%	0.0%	100.0%
How difficult was it to do the following things? - Find a job	Count	1	0	0	0	1
	Row N %	100.0%	0.0%	0.0%	0.0%	100.0%
How difficult was it to do the following things? - Find child care	Count	1	0	0	0	1
	Row N %	100.0%	0.0%	0.0%	0.0%	100.0%

Have you experienced discrimination in the past 12 months?					
		Frequency	Percent	Valid Percent	Cumulative Percent
Valid	Yes	7	7.7	8.6	8.6
	No	74	81.3	91.4	100.0
	Total	81	89.0	100.0	
Missing	Prefer not to respond	1	1.1		
	System	9	9.9		

	Total	10	11.0		
Total		91	100.0		

Multiple Response						
Case Summary						
Cases						
Valid			Missing		Total	
	N	Percent	N	Percent	N	Percent
MRQ6.4 ^a	7	7.7%	84	92.3%	91	100.0%
a. Dichotomy group tabulated at value 1.						

MRQ6.4 Frequencies				
		Responses		Percent of Cases
		N	Percent	
MRQ6.4 ^a	In what areas have you experienced discrimination? Select all that apply. - Selected Choice Ethnicity	1	9.1%	14.3%
	In what areas have you experienced discrimination? Select all that apply. - Selected Choice Sex	2	18.2%	28.6%
	In what areas have you experienced discrimination? Select all that apply. - Selected Choice Sexual orientation	1	9.1%	14.3%
	In what areas have you experienced discrimination? Select all that apply. - Selected Choice Age	3	27.3%	42.9%
	In what areas have you experienced discrimination? Select all that apply. - Selected Choice Weight	2	18.2%	28.6%
	In what areas have you experienced discrimination? Select all that apply. - Selected Choice Another area (please specify)	2	18.2%	28.6%
Total		11	100.0%	157.1%
a. Dichotomy group tabulated at value 1.				

Multiple Response						
Case Summary						
Cases						

	Valid		Missing		Total	
	N	Percent	N	Percent	N	Percent
MRQ6.5 ^a	7	7.7%	84	92.3%	91	100.0%

a. Dichotomy group tabulated at value 1.

MRQ6.5 Frequencies

		Responses		Percent of Cases
		N	Percent	
MRQ6.5 ^a	In which of the following situations did you experience discrimination? Select all that apply. - Selected Choice Applying for a job	1	7.1%	14.3%
	In which of the following situations did you experience discrimination? Select all that apply. - Selected Choice At a job, work or my place of employment	4	28.6%	57.1%
	In which of the following situations did you experience discrimination? Select all that apply. - Selected Choice Receiving medical care	2	14.3%	28.6%
	In which of the following situations did you experience discrimination? Select all that apply. - Selected Choice Looking for housing	1	7.1%	14.3%
	In which of the following situations did you experience discrimination? Select all that apply. - Selected Choice Applying for a credit card, mortgage, or bank loan	1	7.1%	14.3%
	In which of the following situations did you experience discrimination? Select all that apply. - Selected Choice Shopping at a store or eating at a restaurant	4	28.6%	57.1%
	In which of the following situations did you experience discrimination? Select all that apply. - Selected Choice Interacting with the police	1	7.1%	14.3%
Total		14	100.0%	200.0%

a. Dichotomy group tabulated at value 1.

How difficult is it for you to pay for heating, housing, or medical care?

		Frequency	Percent	Valid Percent	Cumulative Percent
Valid	Not difficult at all	35	38.5	43.2	43.2
	Slightly difficult	30	33.0	37.0	80.2
	Somewhat difficult	12	13.2	14.8	95.1
	Very difficult	4	4.4	4.9	100.0
	Total	81	89.0	100.0	
Missing	I don't know	2	2.2		
	System	8	8.8		

	Total	10	11.0		
Total		91	100.0		

In the last month, have you had to sleep outside, in a shelter, in your car, at a family member or friend's house, or in a place not meant for sleeping?

		Frequency	Percent	Valid Percent	Cumulative Percent
Valid	Yes	4	4.4	4.8	4.8
	No	79	86.8	95.2	100.0
	Total	83	91.2	100.0	
Missing	System	8	8.8		
Total		91	100.0		

Statistics

What is your age? - Select your age on the slider		
N	Valid	82
	Missing	9
Mean		42.7683
Median		40.0000

RECODE: Age

		Frequency	Percent	Valid Percent	Cumulative Percent
Valid	Less than 18 years	6	6.6	7.3	7.3
	18 to 34 years	26	28.6	31.7	39.0
	35 to 44 years	15	16.5	18.3	57.3
	45 to 64 years	24	26.4	29.3	86.6
	65 to 84 years	8	8.8	9.8	96.3
	85 years and older	3	3.3	3.7	100.0
	Total	82	90.1	100.0	
Missing	System	9	9.9		
Total		91	100.0		

What is your gender? - Selected Choice					
		Frequency	Percent	Valid Percent	Cumulative Percent
Valid	Male	16	17.6	19.5	19.5
	Female	66	72.5	80.5	100.0
	Total	82	90.1	100.0	
Missing	Prefer not to say	3	3.3		
	System	6	6.6		
	Total	9	9.9		
Total		91	100.0		

Multiple Response						
Case Summary						
	Cases					
	Valid		Missing		Total	
	N	Percent	N	Percent	N	Percent
MRQ7.3 ^a	89	97.8%	2	2.2%	91	100.0%
a. Dichotomy group tabulated at value 1.						

MRQ7.3 Frequencies				
		Responses		Percent of Cases
		N	Percent	
MRQ7.3 ^a	Which of these groups best represents your race? Select all that apply. - Selected Choice White	85	95.5%	95.5%
	Which of these groups best represents your race? Select all that apply. - Selected Choice American Indian or Alaska Native	1	1.1%	1.1%
	Which of these groups best represents your race? Select all that apply. - Selected Choice Asian	1	1.1%	1.1%
	Which of these groups best represents your race? Select all that apply. - Selected Choice Other (please describe)	1	1.1%	1.1%
	Which of these groups best represents your race? Select all that apply. - Selected Choice Prefer not to say	1	1.1%	1.1%
Total		89	100.0%	100.0%

a. Dichotomy group tabulated at value 1.

Do you identify as Hispanic, Latine, or of Spanish origin?					
		Frequency	Percent	Valid Percent	Cumulative Percent
Valid	Yes	10	11.0	11.4	11.4
	No	78	85.7	88.6	100.0
	Total	88	96.7	100.0	
Missing	Prefer not to say	2	2.2		
	System	1	1.1		
	Total	3	3.3		
Total		91	100.0		

What is your estimated annual household income?					
		Frequency	Percent	Valid Percent	Cumulative Percent
Valid	Less than \$15,000	1	1.1	1.4	1.4
	\$15,000 - \$24,999	7	7.7	9.6	11.0
	\$25,000 - \$49,999	13	14.3	17.8	28.8
	\$50,000 - \$74,999	20	22.0	27.4	56.2
	\$75,000 - \$99,999	12	13.2	16.4	72.6
	\$100,000 - \$149,999	13	14.3	17.8	90.4
	\$150,000 and over	7	7.7	9.6	100.0
	Total	73	80.2	100.0	
Missing	Prefer not to say	16	17.6		
	System	2	2.2		
	Total	18	19.8		
Total		91	100.0		

What is the highest level of education you have completed?					
		Frequency	Percent	Valid Percent	Cumulative Percent
Valid	9th to 12th Grade, no diploma	1	1.1	1.1	1.1
	High school graduate or equivalency	14	15.4	15.9	17.0
	Some college, no degree	12	13.2	13.6	30.7
	Associate's degree	23	25.3	26.1	56.8
	Bachelor's degree	28	30.8	31.8	88.6
	Graduate or professional degree	10	11.0	11.4	100.0
	Total	88	96.7	100.0	
Missing	Prefer not to say	2	2.2		
	System	1	1.1		
	Total	3	3.3		
Total		91	100.0		

Which of these categories best describes your employment status?					
		Frequency	Percent	Valid Percent	Cumulative Percent
Valid	Employed full time	58	63.7	67.4	67.4
	Employed part time	6	6.6	7.0	74.4
	Unemployed	1	1.1	1.2	75.6
	Retired	21	23.1	24.4	100.0
	Total	86	94.5	100.0	
Missing	Prefer not to say	2	2.2		
	System	3	3.3		
	Total	5	5.5		
Total		91	100.0		

What is your marital status?					
		Frequency	Percent	Valid Percent	Cumulative Percent
Valid	Single	11	12.1	12.4	12.4
	Married or in a domestic partnership	64	70.3	71.9	84.3
	Divorced or separated	4	4.4	4.5	88.8
	Widowed	10	11.0	11.2	100.0
	Total	89	97.8	100.0	
Missing	Prefer not to say	1	1.1		
	System	1	1.1		
	Total	2	2.2		
Total		91	100.0		

Statistics		
How many people live in your household? Use numbers only. If you live alone, put "1".		
N	Valid	88
	Missing	3
Mean		2.9318
Median		2.0000

RECODE: How many people live in your household?					
		Frequency	Percent	Valid Percent	Cumulative Percent
Valid	1 person	16	17.6	18.2	18.2
	2 to 4 people	55	60.4	62.5	80.7
	5 or more people	17	18.7	19.3	100.0
	Total	88	96.7	100.0	
Missing	System	3	3.3		
Total		91	100.0		

Do you have access to reliable internet in your home?					
		Frequency	Percent	Valid Percent	Cumulative Percent
Valid	Yes	89	97.8	98.9	98.9
	No	1	1.1	1.1	100.0
	Total	90	98.9	100.0	
Missing	System	1	1.1		
Total		91	100.0		

How did you get access to this survey, or survey link? - Selected Choice					
		Frequency	Percent	Valid Percent	Cumulative Percent
Valid	Hospital or public health website	14	15.4	16.1	16.1
	Hospital or public health social media page (e.g. Facebook)	23	25.3	26.4	42.5
	Hospital or public health employee directly	9	9.9	10.3	52.9
	Economic development website or social media page	4	4.4	4.6	57.5
	Other website or social media page (please specify)	8	8.8	9.2	66.7
	Newsletter (please specify from where)	1	1.1	1.1	67.8
	Newspaper advertisement	4	4.4	4.6	72.4
	Word of mouth	11	12.1	12.6	85.1
	Direct email (please specify from where)	13	14.3	14.9	100.0
	Total	87	95.6	100.0	
Missing	System	4	4.4		
Total		91	100.0		

Distribution Channel					
		Frequency	Percent	Valid Percent	Cumulative Percent
Valid	anonymous	84	92.3	92.3	92.3
	qr	7	7.7	7.7	100.0
	Total	91	100.0	100.0	